

Product datasheet for **TA339836**

PYHIN1 Rabbit Polyclonal Antibody

Product data:

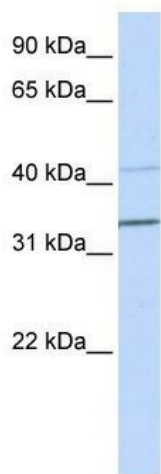
Product Type:	Primary Antibodies
Applications:	WB
Recommended Dilution:	WB
Reactivity:	Human
Host:	Rabbit
Isotype:	IgG
Clonality:	Polyclonal
Immunogen:	The immunogen for anti-PYHIN1 antibody: synthetic peptide directed towards the N terminal of human PYHIN1. Synthetic peptide located within the following region: ANNYKKIVLLKGLEVINDYHFRIVKSLLSNDLKLNPKMKEEYDKIQIADL
Formulation:	Liquid. Purified antibody supplied in 1x PBS buffer with 0.09% (w/v) sodium azide and 2% sucrose.
Concentration:	lot specific
Purification:	Affinity Purified
Conjugation:	Unconjugated
Storage:	Store at -20°C as received.
Stability:	Stable for 12 months from date of receipt.
Predicted Protein Size:	55 kDa
Gene Name:	pyrin and HIN domain family member 1
Database Link:	NP_689714 Entrez Gene 149628 Human Q6K0P9
Background:	PYHIN1 belongs to the HIN-200 family. This protein is major mediator of the tumor suppressor activity of IFN in breast cancer cells. It promotes ubiquitination and subsequent degradation of MDM2, which leads to p53/TP53 stabilization, and HDAC1, which in turn enhances maspin expression, and impairs invasive activity of cancer cells.
Synonyms:	IFIX



[View online »](#)

Note: Immunogen Sequence Homology: Human: 100%; Mouse: 100%; Rabbit: 93%; Dog: 91%; Horse: 91%; Bovine: 91%; Pig: 85%; Rat: 85%

Product images:



WB Suggested Anti-PYHIN1 Antibody Titration:
0.2-1 ug/ml; ELISA Titer: 1: 62500; Positive
Control: MCF7 cell lysate