

## Product datasheet for **TA339833**

### Zfp69 Rabbit Polyclonal Antibody

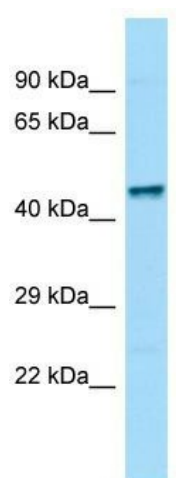
#### Product data:

Product Type:	Primary Antibodies
Applications:	WB
Recommended Dilution:	WB
Reactivity:	Mouse
Host:	Rabbit
Isotype:	IgG
Clonality:	Polyclonal
Immunogen:	The immunogen for Anti-Zfp69 antibody is: synthetic peptide directed towards the C-terminal region of Mouse Zfp69. Synthetic peptide located within the following region: KAFRQRIHLSNHRVTGTVKAYECNRCGKAYRHDSSFKKHQRHHTGKPY
Formulation:	Liquid. Purified antibody supplied in 1x PBS buffer with 0.09% (w/v) sodium azide and 2% sucrose. <i>Note that this product is shipped as lyophilized powder to China customers.</i>
Concentration:	lot specific
Purification:	Affinity Purified
Conjugation:	Unconjugated
Storage:	Store at -20°C as received.
Stability:	Stable for 12 months from date of receipt.
Predicted Protein Size:	49 kDa
Gene Name:	zinc finger protein 69
Database Link:	<a href="#">NP_001005788</a> <a href="#">Entrez Gene 381549 Mouse A2A761</a>
Background:	The function of this protein remains unknown.
Synonyms:	Gm1029; KRAB2; Krab2; Zfp63
Note:	Immunogen Sequence Homology: Pig: 100%; Rat: 100%; Horse: 100%; Human: 100%; Mouse: 100%; Bovine: 100%; Rabbit: 100%; Dog: 86%



[View online »](#)

## Product images:



WB Suggested Anti-Zfp69 Antibody; Titration: 1.0 ug/ml; Positive Control: Mouse Testis