

## Product datasheet for **TA339832**

### CFAP20DC Rabbit Polyclonal Antibody

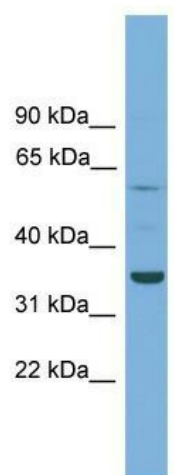
#### Product data:

Product Type:	Primary Antibodies
Applications:	WB
Recommended Dilution:	WB
Reactivity:	Human
Host:	Rabbit
Isotype:	IgG
Clonality:	Polyclonal
Immunogen:	The immunogen for anti-C3orf67 antibody: synthetic peptide directed towards the N terminal of human C3orf67. Synthetic peptide located within the following region: TDIIPRSCQLMTDVPHTVQLLNMTKLRQTEIKFGGHPLRSAESDQFINRG
Formulation:	Liquid. Purified antibody supplied in 1x PBS buffer with 0.09% (w/v) sodium azide and 2% sucrose.
Concentration:	lot specific
Purification:	Affinity Purified
Conjugation:	Unconjugated
Storage:	Store at -20°C as received.
Stability:	Stable for 12 months from date of receipt.
Predicted Protein Size:	63 kDa
Gene Name:	chromosome 3 open reading frame 67
Database Link:	<a href="#">NP_940865</a> <a href="#">Entrez Gene 200844 Human</a> <a href="#">Q6ZVT6</a>
Background:	The function of the protein remains unknown.
Synonyms:	FLJ42117; FLJ42930; MGC48416
Note:	Immunogen Sequence Homology: Pig: 100%; Rat: 100%; Horse: 100%; Human: 100%; Mouse: 100%; Bovine: 100%; Guinea pig: 100%; Dog: 93%; Rabbit: 86%



[View online »](#)

## Product images:



WB Suggested Anti-C3orf67 Antibody Titration:  
0.2-1 ug/ml; ELISA Titer: 1: 312500; Positive  
Control: OVCAR-3 cell lysate