

## Product datasheet for **TA339831**

### SMYD1 Rabbit Polyclonal Antibody

#### Product data:

Product Type:	Primary Antibodies
Applications:	WB
Recommended Dilution:	WB
Reactivity:	Human
Host:	Rabbit
Isotype:	IgG
Clonality:	Polyclonal
Immunogen:	The immunogen for anti-SMYD1 antibody: synthetic peptide directed towards the middle region of human SMYD1. Synthetic peptide located within the following region: AVMRAGLTNWHAGNIEVGHGMICKAYAILLVTHGPSHPITKDLEAMRVQT
Formulation:	Liquid. Purified antibody supplied in 1x PBS buffer with 0.09% (w/v) sodium azide and 2% sucrose. <i>Note that this product is shipped as lyophilized powder to China customers.</i>
Concentration:	lot specific
Purification:	Affinity Purified
Conjugation:	Unconjugated
Storage:	Store at -20°C as received.
Stability:	Stable for 12 months from date of receipt.
Predicted Protein Size:	56 kDa
Gene Name:	SET and MYND domain containing 1
Database Link:	<a href="#">NP_938015</a> <a href="#">Entrez Gene 150572 Human</a> <a href="#">Q8NB12</a>
Background:	SMYD1 acts as a transcriptional repressor. SMYD1 is essential for cardiomyocyte differentiation and cardiac morphogenesis.
Synonyms:	BOP; KMT3D; ZMYND18; ZMYND22

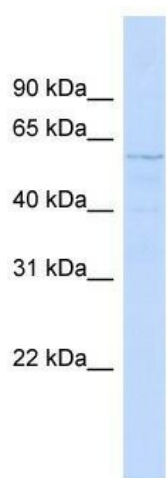


[View online »](#)

**Note:** Immunogen Sequence Homology: Dog: 100%; Pig: 100%; Rat: 100%; Horse: 100%; Human: 100%; Mouse: 100%; Bovine: 100%; Rabbit: 100%; Guinea pig: 100%; Zebrafish: 93%

**Protein Families:** Druggable Genome

**Product images:**



WB Suggested Anti-SMYD1 Antibody Titration:  
0.2-1 ug/ml; ELISA Titer: 1: 312500; Positive  
Control: Hela cell lysate