

Product datasheet for **TA339826**

WDFY3 Rabbit Polyclonal Antibody

Product data:

Product Type:	Primary Antibodies
Applications:	WB
Recommended Dilution:	WB
Reactivity:	Human
Host:	Rabbit
Isotype:	IgG
Clonality:	Polyclonal
Immunogen:	The immunogen for anti-WDFY3 antibody: synthetic peptide directed towards the C terminal of human WDFY3. Synthetic peptide located within the following region: EKLADAVRFLGCFSDLRKISAMNVFPSNTQPFQRLLEEDVISIESVSPTL
Formulation:	Liquid. Purified antibody supplied in 1x PBS buffer with 0.09% (w/v) sodium azide and 2% sucrose. <i>Note that this product is shipped as lyophilized powder to China customers.</i>
Concentration:	lot specific
Purification:	Affinity Purified
Conjugation:	Unconjugated
Storage:	Store at -20°C as received.
Stability:	Stable for 12 months from date of receipt.
Predicted Protein Size:	90 kDa
Gene Name:	WD repeat and FYVE domain containing 3
Database Link:	NP_848698 Entrez Gene 23001 Human Q8IZQ1
Background:	WDFY3 is a protein which contains WD repeats and an FYVE domain. WDFY3 might target cytosolic protein aggregates for autophagic degradation. This gene encodes a protein which contains WD repeats and an FYVE domain. Multiple alternatively spliced transcript variants have been found for this gene, but the full-length nature of some variants has not been defined.

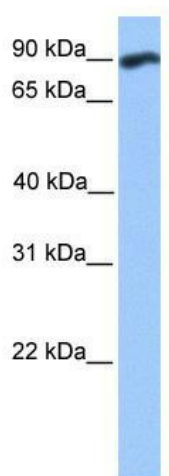


[View online »](#)

Synonyms: ALFY; KIAA0993; MGC16461; WD repeat and FYVE domain containing 3; ZFYVE25

Note: Immunogen Sequence Homology: Dog: 100%; Pig: 100%; Horse: 100%; Human: 100%; Mouse: 100%; Bovine: 100%; Rabbit: 100%; Guinea pig: 93%; Rat: 92%

Product images:



WB Suggested Anti-WDFY3 Antibody Titration:
0.2-1 ug/ml; Positive Control: Human brain