

Product datasheet for **TA339825**

WDFY3 Rabbit Polyclonal Antibody

Product data:

Product Type:	Primary Antibodies
Applications:	WB
Recommended Dilution:	WB
Reactivity:	Human
Host:	Rabbit
Isotype:	IgG
Clonality:	Polyclonal
Immunogen:	The immunogen for anti-WDFY3 antibody: synthetic peptide directed towards the middle region of human WDFY3. Synthetic peptide located within the following region: LEVMVNLLHKYAALLKDPTQALNEQGDSRNNSSVEDQKHLALLVMETLTV
Formulation:	Liquid. Purified antibody supplied in 1x PBS buffer with 0.09% (w/v) sodium azide and 2% sucrose. <i>Note that this product is shipped as lyophilized powder to China customers.</i>
Concentration:	lot specific
Purification:	Affinity Purified
Conjugation:	Unconjugated
Storage:	Store at -20°C as received.
Stability:	Stable for 12 months from date of receipt.
Predicted Protein Size:	90 kDa
Gene Name:	WD repeat and FYVE domain containing 3
Database Link:	NP_848698 Entrez Gene 23001 Human Q8IZQ1



[View online »](#)

Background:

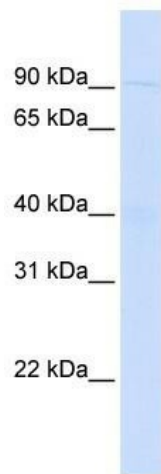
WDFY3 is a protein which contains WD repeats and an FYVE domain. WDFY3 might target cytosolic protein aggregates for autophagic degradation. Multiple alternatively spliced transcript variants have been found for this gene, but the full-length nature of some variants has not been defined. This gene encodes a protein which contains WD repeats and an FYVE domain. Multiple alternatively spliced transcript variants have been found for this gene, but the full-length nature of some variants has not been defined.

Synonyms:

ALFY; KIAA0993; MGC16461; WD repeat and FYVE domain containing 3; ZFYVE25

Note:

Immunogen Sequence Homology: Rat: 100%; Human: 100%; Mouse: 100%; Dog: 93%; Horse: 93%; Bovine: 93%; Pig: 86%; Rabbit: 86%; Guinea pig: 86%

Product images:

WB Suggested Anti-WDFY3 Antibody Titration:
0.2-1 ug/ml; ELISA Titer: 1: 12500; Positive
Control: Human Muscle