

Product datasheet for **TA339823**

ZNF680 Rabbit Polyclonal Antibody

Product data:

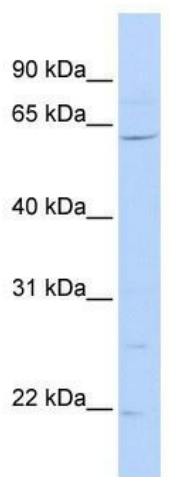
Product Type:	Primary Antibodies
Applications:	WB
Recommended Dilution:	WB
Reactivity:	Human
Host:	Rabbit
Isotype:	IgG
Clonality:	Polyclonal
Immunogen:	The immunogen for anti-ZNF680 antibody: synthetic peptide directed towards the N terminal of human ZNF680. Synthetic peptide located within the following region: RGYGKCGHENLQLRISCKSVDESKVFKEGYNELNQCLRTTQSKIFQCDKY
Formulation:	Liquid. Purified antibody supplied in 1x PBS buffer with 0.09% (w/v) sodium azide and 2% sucrose. <i>Note that this product is shipped as lyophilized powder to China customers.</i>
Concentration:	lot specific
Purification:	Affinity Purified
Conjugation:	Unconjugated
Storage:	Store at -20°C as received.
Stability:	Stable for 12 months from date of receipt.
Predicted Protein Size:	62 kDa
Gene Name:	zinc finger protein 680
Database Link:	NP_848653 Entrez Gene 340252 Human Q8NEM1
Background:	ZNF680 belongs to the krueppel C2H2-type zinc-finger protein family. It contains 12 C2H2-type zinc fingers and 1 KRAB domain. ZNF680 may be involved in transcriptional regulation.
Synonyms:	FLJ90430
Note:	Immunogen Sequence Homology: Human: 100%



[View online »](#)

Protein Families: Transcription Factors

Product images:



WB Suggested Anti-ZNF680 Antibody Titration:
0.2-1 ug/ml; ELISA Titer: 1: 312500; Positive
Control: 721_B cell lysate