

Product datasheet for **TA339821**

ZFYVE1 Rabbit Polyclonal Antibody

Product data:

Product Type:	Primary Antibodies
Applications:	WB
Recommended Dilution:	WB
Reactivity:	Human
Host:	Rabbit
Isotype:	IgG
Clonality:	Polyclonal
Immunogen:	The immunogen for anti-ZFYVE1 antibody: synthetic peptide directed towards the N terminal of human ZFYVE1. Synthetic peptide located within the following region: GVPHEAKSRCRYSHQYDNRVYTCKACYERGEEVSVVPKTSASTDSPWMGL
Formulation:	Liquid. Purified antibody supplied in 1x PBS buffer with 0.09% (w/v) sodium azide and 2% sucrose. <i>Note that this product is shipped as lyophilized powder to China customers.</i>
Concentration:	lot specific
Purification:	Affinity Purified
Conjugation:	Unconjugated
Storage:	Store at -20°C as received.
Stability:	Stable for 12 months from date of receipt.
Predicted Protein Size:	40 kDa
Gene Name:	zinc finger FYVE-type containing 1
Database Link:	NP_848535 Entrez Gene 53349 Human Q9HBF4



[View online »](#)

Background:

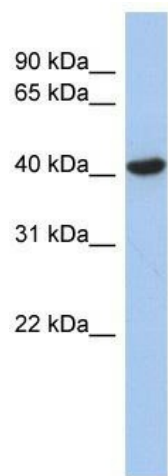
ZFYVE1 contains two zinc-binding FYVE domains in tandem. This protein binds to phosphatidylinositol-3-phosphate (PtdIns3P) through its FYVE-type zinc finger. It displays a predominantly Golgi, endoplasmic reticulum and vesicular distribution. Alternatively spliced transcript variants have been found for this gene, and they encode two isoforms with different sizes. The FYVE domain mediates the recruitment of proteins involved in membrane trafficking and cell signaling to phosphatidylinositol 3-phosphate (PtdIns(3)P)-containing membranes. This gene encodes a protein which contains two zinc-binding FYVE domains in tandem. This protein displays a predominantly Golgi, endoplasmic reticulum and vesicular distribution. Alternatively spliced transcript variants have been found for this gene, and they encode two isoforms with different sizes.

Synonyms:

DFCP1; PPP1R172; SR3; TAFF1; ZNFN2A1

Note:

Immunogen Sequence Homology: Human: 100%; Dog: 93%; Pig: 93%; Rat: 93%; Horse: 93%; Mouse: 93%; Rabbit: 93%; Guinea pig: 93%; Bovine: 92%

Product images:

WB Suggested Anti-ZFYVE1 Antibody Titration:
0.2-1 ug/ml; ELISA Titer: 1: 312500; Positive
Control: Human Stomach