

Product datasheet for **TA339820**

ZNF620 Rabbit Polyclonal Antibody

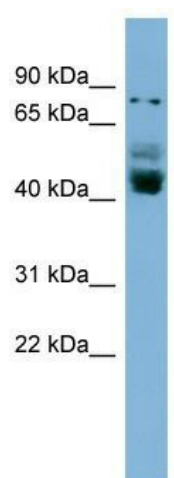
Product data:

Product Type:	Primary Antibodies
Applications:	WB
Recommended Dilution:	WB
Reactivity:	Human
Host:	Rabbit
Isotype:	IgG
Clonality:	Polyclonal
Immunogen:	The immunogen for anti-ZNF620 antibody: synthetic peptide directed towards the N terminal of human ZNF620. Synthetic peptide located within the following region: KETESFRLMVGGLPGNVSQHLDGSSLEQPQGHWIKTKSKRRHFTD TSA
Formulation:	Liquid. Purified antibody supplied in 1x PBS buffer with 0.09% (w/v) sodium azide and 2% sucrose. <i>Note that this product is shipped as lyophilized powder to China customers.</i>
Concentration:	lot specific
Purification:	Affinity Purified
Conjugation:	Unconjugated
Storage:	Store at -20°C as received.
Stability:	Stable for 12 months from date of receipt.
Predicted Protein Size:	48 kDa
Gene Name:	zinc finger protein 620
Database Link:	NP_787084 Entrez Gene 253639 Human Q6ZNG0
Background:	ZNF620 is a new candidate transcription factor.
Synonyms:	MGC50836
Note:	Immunogen Sequence Homology: Human: 100%; Dog: 80%



[View online »](#)

Product images:



WB Suggested Anti-ZNF620 Antibody Titration:
0.2-1 ug/ml; ELISA Titer: 1: 1562500; Positive
Control: NCI-H226 cell lysate