

## Product datasheet for **TA339818**

### LIN9 Rabbit Polyclonal Antibody

#### Product data:

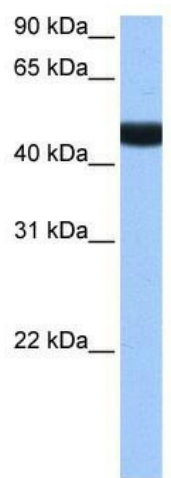
Product Type:	Primary Antibodies
Applications:	WB
Recommended Dilution:	WB
Reactivity:	Human
Host:	Rabbit
Isotype:	IgG
Clonality:	Polyclonal
Immunogen:	The immunogen for anti-LIN9 antibody: synthetic peptide directed towards the N terminal of human LIN9. Synthetic peptide located within the following region: TRKLTRVEWGKIRRLMGKPRRCSSAFFEERSALKQKRQKIRLLQQRKVA
Formulation:	Liquid. Purified antibody supplied in 1x PBS buffer with 0.09% (w/v) sodium azide and 2% sucrose.
Concentration:	lot specific
Purification:	Affinity Purified
Conjugation:	Unconjugated
Storage:	Store at -20°C as received.
Stability:	Stable for 12 months from date of receipt.
Predicted Protein Size:	53 kDa
Gene Name:	lin-9 DREAM MuvB core complex component
Database Link:	<a href="#">NP_001257338</a> <a href="#">Entrez Gene 286826 Human</a> <a href="#">Q5TKA1</a>
Background:	LIN9 belongs to the lin-9 family and acts as a tumor suppressor. It inhibits DNA synthesis. Its ability to inhibit oncogenic transformation is mediated through its association with RB1. LIN9 plays a role in the expression of genes required for the G1/S transition.
Synonyms:	BARA; BARPsv; Lin-9; TGS; TGS1; TGS2


[View online »](#)

**Note:** Immunogen Sequence Homology: Dog: 100%; Pig: 100%; Rat: 100%; Horse: 100%; Human: 100%; Mouse: 100%; Bovine: 100%; Rabbit: 100%; Guinea pig: 100%; Zebrafish: 86%

**Protein Families:** Druggable Genome

**Product images:**



WB Suggested Anti-LIN9 Antibody Titration: 0.2-1 ug/ml; Positive Control: Human brain