

Product datasheet for **TA339817**

LIN9 Rabbit Polyclonal Antibody

Product data:

Product Type:	Primary Antibodies
Applications:	WB
Recommended Dilution:	WB
Reactivity:	Human
Host:	Rabbit
Isotype:	IgG
Clonality:	Polyclonal
Immunogen:	The immunogen for anti-LIN9 antibody: synthetic peptide directed towards the N terminal of human LIN9. Synthetic peptide located within the following region: SLQKTPVWKGRNTSSAVEMPFRNSKRSRLFSEDDDRQINTRSPKRNQRVA
Formulation:	Liquid. Purified antibody supplied in 1x PBS buffer with 0.09% (w/v) sodium azide and 2% sucrose. <i>Note that this product is shipped as lyophilized powder to China customers.</i>
Concentration:	lot specific
Purification:	Affinity Purified
Conjugation:	Unconjugated
Storage:	Store at -20°C as received.
Stability:	Stable for 12 months from date of receipt.
Predicted Protein Size:	64 kDa
Gene Name:	lin-9 DREAM MuvB core complex component
Database Link:	NP_775106 Entrez Gene 286826 Human Q5TKA1
Background:	LIN9 belongs to the lin-9 family and acts as a tumor suppressor. It inhibits DNA synthesis. Its ability to inhibit oncogenic transformation is mediated through its association with RB1. LIN9 plays a role in the expression of genes required for the G1/S transition.
Synonyms:	BARA; BARPsv; Lin-9; TGS; TGS1; TGS2

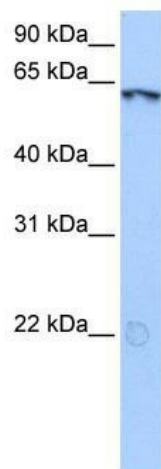


[View online »](#)

Note: Immunogen Sequence Homology: Dog: 100%; Pig: 100%; Rat: 100%; Horse: 100%; Human: 100%; Mouse: 100%; Bovine: 100%; Rabbit: 100%; Guinea pig: 100%

Protein Families: Druggable Genome

Product images:



WB Suggested Anti-LIN9 Antibody Titration: 0.2-1 ug/ml; Positive Control: Hela cell lysate