

Product datasheet for **TA339815**

Myocd Rabbit Polyclonal Antibody

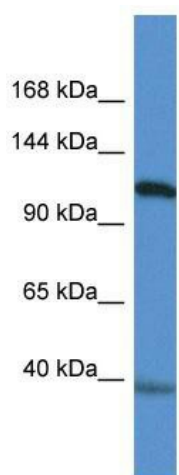
Product data:

Product Type:	Primary Antibodies
Applications:	WB
Recommended Dilution:	WB
Reactivity:	Mouse
Host:	Rabbit
Isotype:	IgG
Clonality:	Polyclonal
Immunogen:	The immunogen for anti-Myocd antibody: synthetic peptide corresponding to a region of Mouse. Synthetic peptide located within the following region: KSLGDSKNRHKPKDPKPKVKLKYHQYIPPDQKAEKSPPMDSAYARLL
Formulation:	Liquid. Purified antibody supplied in 1x PBS buffer with 0.09% (w/v) sodium azide and 2% sucrose.
Concentration:	lot specific
Purification:	Affinity Purified
Conjugation:	Unconjugated
Storage:	Store at -20°C as received.
Stability:	Stable for 12 months from date of receipt.
Predicted Protein Size:	106 kDa
Gene Name:	myocardin
Database Link:	NP_660118 Entrez Gene 214384 Mouse Q8VIM5
Background:	The function of this protein remains unknown.
Synonyms:	MYCD; myocardin
Note:	Immunogen Sequence Homology: Dog: 100%; Pig: 100%; Rat: 100%; Horse: 100%; Human: 100%; Mouse: 100%; Bovine: 100%; Rabbit: 100%; Guinea pig: 100%; Zebrafish: 85%



[View online »](#)

Product images:



WB Suggested Anti-Capn15 Antibody; Titration:
1.0 ug/ml; Positive Control: Mouse Pancreas