

## Product datasheet for **TA339814**

### VGLL2 Rabbit Polyclonal Antibody

#### Product data:

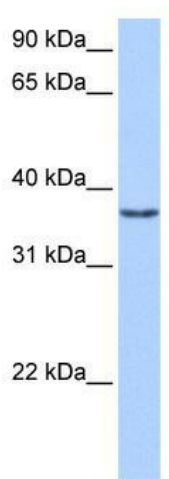
Product Type:	Primary Antibodies
Applications:	WB
Recommended Dilution:	WB
Reactivity:	Human
Host:	Rabbit
Isotype:	IgG
Clonality:	Polyclonal
Immunogen:	The immunogen for anti-VGLL2 antibody: synthetic peptide directed towards the middle region of human VGLL2. Synthetic peptide located within the following region: RPPEAEYINSRCVLFITYFQGDISSVDEHFSRALSQPSSYSPSCTSSKAP
Formulation:	Liquid. Purified antibody supplied in 1x PBS buffer with 0.09% (w/v) sodium azide and 2% sucrose. <i>Note that this product is shipped as lyophilized powder to China customers.</i>
Concentration:	lot specific
Purification:	Affinity Purified
Conjugation:	Unconjugated
Storage:	Store at -20°C as received.
Stability:	Stable for 12 months from date of receipt.
Predicted Protein Size:	33 kDa
Gene Name:	vestigial like family member 2
Database Link:	<a href="#">NP_872586</a> <a href="#">Entrez Gene 245806 Human</a> <a href="#">Q8N8G2</a>
Background:	VGLL2 belongs to the vestigial family. It may act as a specific coactivator for the mammalian TEFs. VGLL2 may play a role in the development of skeletal muscles.
Synonyms:	VGL2; VITO1



[View online »](#)

**Note:** Immunogen Sequence Homology: Dog: 100%; Pig: 100%; Rat: 100%; Horse: 100%; Human: 100%; Bovine: 100%; Rabbit: 100%; Zebrafish: 100%; Guinea pig: 100%; Mouse: 93%

**Product images:**



WB Suggested Anti-VGLL2 Antibody Titration: 0.2-1 ug/ml; Positive Control: Human heart