

Product datasheet for **TA339811**

HYAL1 Rabbit Polyclonal Antibody

Product data:

Product Type:	Primary Antibodies
Applications:	IHC, WB
Recommended Dilution:	WB, IHC
Reactivity:	Human
Host:	Rabbit
Isotype:	IgG
Clonality:	Polyclonal
Immunogen:	The immunogen for anti-HYAL1 antibody: synthetic peptide directed towards the N terminal of human HYAL1. Synthetic peptide located within the following region: WNANTQWCLERHGVVDVSVFDVVANPGQTFRGPDMTIFYSSQLGTYPY
Formulation:	Liquid. Purified antibody supplied in 1x PBS buffer with 0.09% (w/v) sodium azide and 2% sucrose. <i>Note that this product is shipped as lyophilized powder to China customers.</i>
Concentration:	lot specific
Purification:	Affinity Purified
Conjugation:	Unconjugated
Storage:	Store at -20°C as received.
Stability:	Stable for 12 months from date of receipt.
Predicted Protein Size:	45 kDa
Gene Name:	hyaluronoglucosaminidase 1
Database Link:	NP_695014 Entrez Gene 3373 Human Q12794



[View online »](#)

Background:

HYAL1 is a lysosomal hyaluronidase. Hyaluronidases intracellularly degrade hyaluronan, one of the major glycosaminoglycans of the extracellular matrix. Hyaluronan is thought to be involved in cell proliferation, migration and differentiation. This enzyme is active at an acidic pH and is the major hyaluronidase in plasma. Mutations in HYAL1 are associated with mucopolysaccharidosis type IX, or hyaluronidase deficiency. HYAL1 is one of several related genes in a region of chromosome 3p21.3 associated with tumor suppression. Multiple transcript variants encoding different isoforms have been found for HYAL1. This gene encodes a lysosomal hyaluronidase. Hyaluronidases intracellularly degrade hyaluronan, one of the major glycosaminoglycans of the extracellular matrix. Hyaluronan is thought to be involved in cell proliferation, migration and differentiation. This enzyme is active at an acidic pH and is the major hyaluronidase in plasma. Mutations in this gene are associated with mucopolysaccharidosis type IX, or hyaluronidase deficiency. The gene is one of several related genes in a region of chromosome 3p21.3 associated with tumor suppression. Multiple transcript variants encoding different isoforms have been found for this gene.

Synonyms:

HYAL-1; LUCA1; MPS9; NAT6

Note:

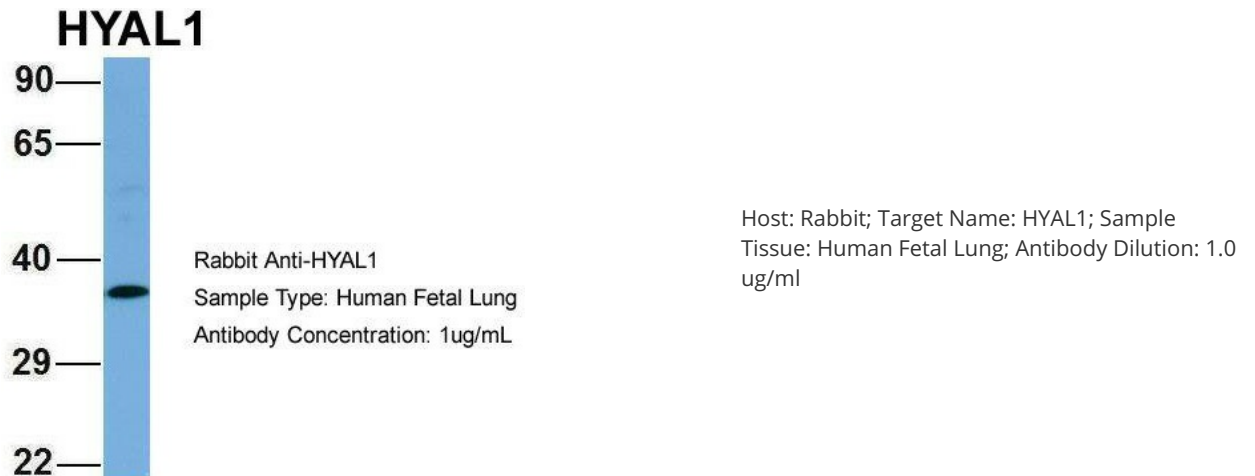
Immunogen Sequence Homology: Pig: 100%; Rat: 100%; Horse: 100%; Human: 100%; Mouse: 100%; Guinea pig: 100%; Rabbit: 93%; Dog: 86%; Bovine: 83%

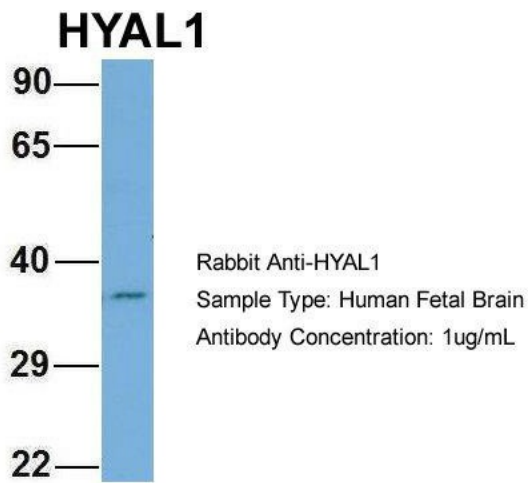
Protein Families:

Secreted Protein

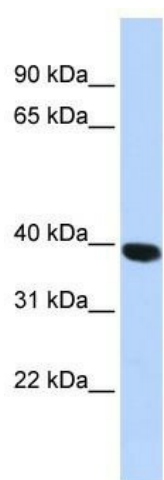
Protein Pathways:

Glycosaminoglycan degradation, Lysosome, Metabolic pathways

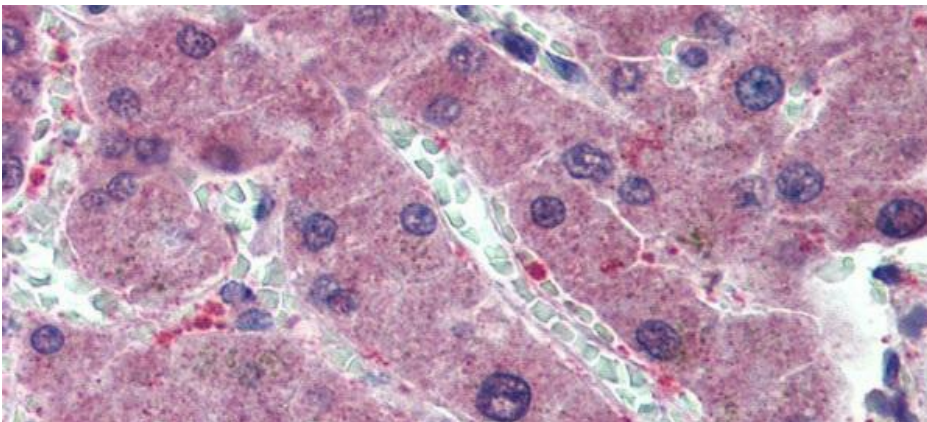
Product images:



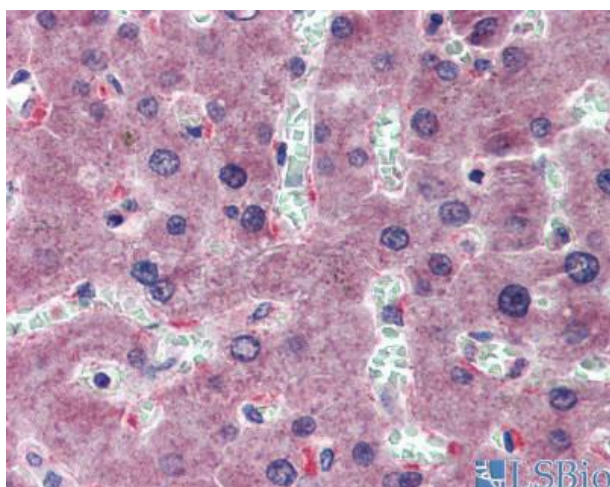
Host: Rabbit; Target Name: HYAL1; Sample Tissue: Human Fetal Brain; Antibody Dilution: 1.0 ug/ml



HYAL1 antibody - N-terminal region validated by WB using HepG2 cell lysate at 1 ug/ml. HYAL1 is supported by BioGPS gene expression data to be expressed in HepG2



Immunohistochemistry with Human Liver cell lysate tissue at an antibody concentration of 5.0 ug/ml using anti-HYAL1 antibody



Immunohistochemistry with breast cancer tissue