

## Product datasheet for **TA339806**

### SRFBP1 Rabbit Polyclonal Antibody

#### Product data:

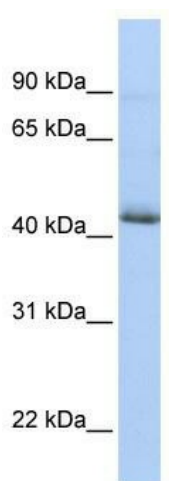
Product Type:	Primary Antibodies
Applications:	WB
Recommended Dilution:	WB
Reactivity:	Human
Host:	Rabbit
Isotype:	IgG
Clonality:	Polyclonal
Immunogen:	The immunogen for anti-SRFBP1 antibody: synthetic peptide directed towards the N terminal of human SRFBP1. Synthetic peptide located within the following region: LKSCKGTEDALLKNQRRARQLLEEIHAMKELKPDIVTKSALGDDINFEKI
Formulation:	Liquid. Purified antibody supplied in 1x PBS buffer with 0.09% (w/v) sodium azide and 2% sucrose. <i>Note that this product is shipped as lyophilized powder to China customers.</i>
Concentration:	lot specific
Purification:	Affinity Purified
Conjugation:	Unconjugated
Storage:	Store at -20°C as received.
Stability:	Stable for 12 months from date of receipt.
Predicted Protein Size:	49 kDa
Gene Name:	serum response factor binding protein 1
Database Link:	<a href="#">NP_689759</a> <a href="#">Entrez Gene 153443 Human</a> <a href="#">Q8NEF9</a>
Background:	SRFBP1 may be involved in regulating transcriptional activation of cardiac genes during the aging process. It may play a role in biosynthesis and/or processing of SLC2A4 in adipose cells.
Synonyms:	BUD22; P49; p49; Rlb1; STRAP



[View online »](#)

**Note:** Immunogen Sequence Homology: Dog: 100%; Pig: 100%; Horse: 100%; Human: 100%; Mouse: 100%; Guinea pig: 100%; Rat: 93%; Bovine: 93%; Rabbit: 93%

**Product images:**



WB Suggested Anti-SRFBP1 Antibody Titration:  
0.2-1 ug/ml; ELISA Titer: 1: 62500; Positive  
Control: HepG2 cell lysate