

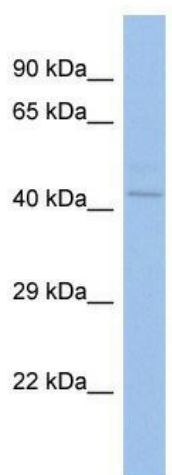
Product datasheet for **TA339804**

ZNF362 Rabbit Polyclonal Antibody

Product data:

| | |
|-------------------------|--|
| Product Type: | Primary Antibodies |
| Applications: | WB |
| Recommended Dilution: | WB |
| Reactivity: | Human |
| Host: | Rabbit |
| Isotype: | IgG |
| Clonality: | Polyclonal |
| Immunogen: | The immunogen for Anti-ZNF362 antibody is: synthetic peptide directed towards the C-terminal region of Human ZNF362. Synthetic peptide located within the following region: KHAKAYCCSMCGRAYTSETYLMKHMSKHTVVEHLVSHHSPQRTESPGIPV |
| Formulation: | Liquid. Purified antibody supplied in 1x PBS buffer with 0.09% (w/v) sodium azide and 2% sucrose. |
| Concentration: | lot specific |
| Purification: | Affinity Purified |
| Conjugation: | Unconjugated |
| Storage: | Store at -20°C as received. |
| Stability: | Stable for 12 months from date of receipt. |
| Predicted Protein Size: | 46 kDa |
| Gene Name: | zinc finger protein 362 |
| Database Link: | NP_689706 Entrez Gene 149076 Human Q5T0B9 |
| Background: | ZNF362 may be involved in transcriptional regulation. |
| Synonyms: | lin-29; RN |
| Note: | Immunogen Sequence Homology: Dog: 100%; Pig: 100%; Rat: 100%; Horse: 100%; Human: 100%; Mouse: 100%; Rabbit: 100%; Guinea pig: 100%; Bovine: 93%; Zebrafish: 93% |


[View online »](#)

Product images:


Host: Rabbit; Target Name: ZNF362; Sample Tissue: OVCAR-3 Whole cell lysates; Antibody Dilution: 1.0 ug/ml ZNF362 is supported by BioGPS gene expression data to be expressed in OVCAR3