

Product datasheet for **TA339803**

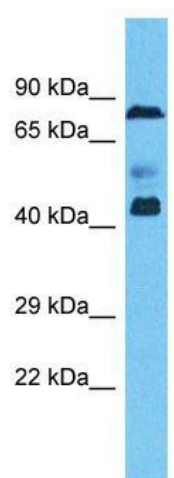
ZNF362 Rabbit Polyclonal Antibody

Product data:

Product Type:	Primary Antibodies
Applications:	WB
Recommended Dilution:	WB
Reactivity:	Human
Host:	Rabbit
Isotype:	IgG
Clonality:	Polyclonal
Immunogen:	The immunogen for Anti-ZNF362 antibody is: synthetic peptide directed towards the N-terminal region of Human ZNF362. Synthetic peptide located within the following region: PSQLDNLVLINKIKEQLMAEKIRPPHLPPTSASSQQPLLVPAPAESSQA
Formulation:	Liquid. Purified antibody supplied in 1x PBS buffer with 0.09% (w/v) sodium azide and 2% sucrose.
Concentration:	lot specific
Purification:	Affinity Purified
Conjugation:	Unconjugated
Storage:	Store at -20°C as received.
Stability:	Stable for 12 months from date of receipt.
Predicted Protein Size:	46 kDa
Gene Name:	zinc finger protein 362
Database Link:	NP_689706 Entrez Gene 149076 Human Q5T0B9
Background:	ZNF362 may be involved in transcriptional regulation.
Synonyms:	lin-29; RN
Note:	Immunogen Sequence Homology: Dog: 100%; Pig: 100%; Rat: 100%; Human: 100%; Mouse: 100%; Bovine: 100%; Rabbit: 100%; Guinea pig: 100%; Zebrafish: 79%



[View online »](#)

Product images:


Host: Rabbit; Target Name: ZNF362; Sample
Tissue: Ovary Tumor lysates; Antibody Dilution:
1.0 ug/ml