

Product datasheet for **TA339802**

ZNF565 Rabbit Polyclonal Antibody

Product data:

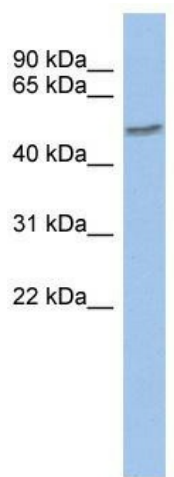
Product Type:	Primary Antibodies
Applications:	WB
Recommended Dilution:	WB
Reactivity:	Human
Host:	Rabbit
Isotype:	IgG
Clonality:	Polyclonal
Immunogen:	The immunogen for anti-ZNF565 antibody: synthetic peptide directed towards the middle region of human ZNF565. Synthetic peptide located within the following region: VSQLTHHQRIHTCEKPYECRECGMAFIRSSQLTEHQRIHPGIKPYECREC
Formulation:	Liquid. Purified antibody supplied in 1x PBS buffer with 0.09% (w/v) sodium azide and 2% sucrose. <i>Note that this product is shipped as lyophilized powder to China customers.</i>
Concentration:	lot specific
Purification:	Affinity Purified
Conjugation:	Unconjugated
Storage:	Store at -20°C as received.
Stability:	Stable for 12 months from date of receipt.
Predicted Protein Size:	58 kDa
Gene Name:	zinc finger protein 565
Database Link:	NP_689690 Entrez Gene 147929 Human Q8N9K5
Background:	ZNF565 may be involved in transcriptional regulation.
Synonyms:	FLJ36991
Note:	Immunogen Sequence Homology: Pig: 100%; Rat: 100%; Horse: 100%; Human: 100%; Bovine: 100%; Rabbit: 100%; Dog: 86%; Mouse: 83%



[View online »](#)

Protein Families: Transcription Factors

Product images:



WB Suggested Anti-ZNF565 Antibody Titration:
0.2-1 ug/ml; ELISA Titer: 1: 1562500; Positive
Control: Human kidney