

Product datasheet for **TA339798**

ZNF501 Rabbit Polyclonal Antibody

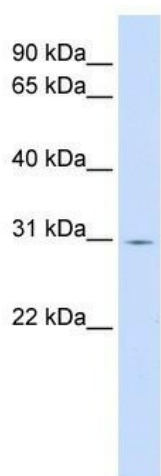
Product data:

Product Type:	Primary Antibodies
Applications:	WB
Recommended Dilution:	WB
Reactivity:	Human
Host:	Rabbit
Isotype:	IgG
Clonality:	Polyclonal
Immunogen:	The immunogen for anti-ZNF501 antibody: synthetic peptide directed towards the C terminal of human ZNF501. Synthetic peptide located within the following region: YKCSECEKTFRKQAHLSEHYRIHTGEKPYECVGCCKSFRHSSALLRHQRL
Formulation:	Liquid. Purified antibody supplied in 1x PBS buffer with 0.09% (w/v) sodium azide and 2% sucrose.
Concentration:	lot specific
Purification:	Affinity Purified
Conjugation:	Unconjugated
Storage:	Store at -20°C as received.
Stability:	Stable for 12 months from date of receipt.
Predicted Protein Size:	31 kDa
Gene Name:	zinc finger protein 501
Database Link:	NP_659481 Entrez Gene 115560 Human Q96CX3
Background:	ZNF501 belongs to the krueppel C2H2-type zinc-finger protein family and may be involved in transcriptional regulation.
Synonyms:	ZNF; ZNF52
Note:	Immunogen Sequence Homology: Dog: 100%; Pig: 100%; Horse: 100%; Human: 100%; Rat: 93%; Bovine: 93%; Rabbit: 93%


[View online »](#)

Protein Families: Transcription Factors

Product images:



WB Suggested Anti-ZNF501 Antibody Titration:
0.2-1 ug/ml; ELISA Titer: 1: 62500; Positive
Control: Human Liver