

Product datasheet for **TA339796**

Scel Rabbit Polyclonal Antibody

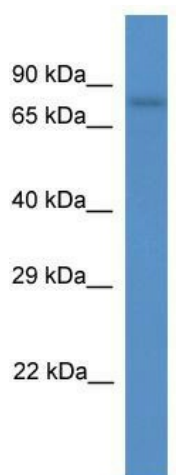
Product data:

| | |
|-------------------------|---|
| Product Type: | Primary Antibodies |
| Applications: | WB |
| Recommended Dilution: | WB |
| Reactivity: | Rat |
| Host: | Rabbit |
| Isotype: | IgG |
| Clonality: | Polyclonal |
| Immunogen: | The immunogen for anti-Scel antibody: synthetic peptide corresponding to a region of Rat. Synthetic peptide located within the following region: DTVVYTRTYVENS KSPK DGYQENISGKYIQTVYSTSDRSVIERDMCTYCR |
| Formulation: | Liquid. Purified antibody supplied in 1x PBS buffer with 0.09% (w/v) sodium azide and 2% sucrose. |
| Concentration: | lot specific |
| Purification: | Affinity Purified |
| Conjugation: | Unconjugated |
| Storage: | Store at -20°C as received. |
| Stability: | Stable for 12 months from date of receipt. |
| Predicted Protein Size: | 73 kDa |
| Gene Name: | sciellin |
| Database Link: | NP_001101858 Entrez Gene 361086 Rat |
| Background: | Scel may function in the assembly or regulation of proteins in the cornified envelope. The LIM domain may be involved in homotypic or heterotypic associations and may function to localize sciellin to the cornified envelope. |
| Synonyms: | FLJ21667; MGC22531; sciellin |
| Note: | Immunogen Sequence Homology: Rat: 100%; Human: 100%; Mouse: 100%; Rabbit: 100%; Dog: 93%; Bovine: 93%; Horse: 86% |



[View online »](#)

Product images:



WB Suggested Anti-Scel Antibody; Titration: 1.0 ug/ml; Positive Control: Rat Heart