

Product datasheet for **TA339794**

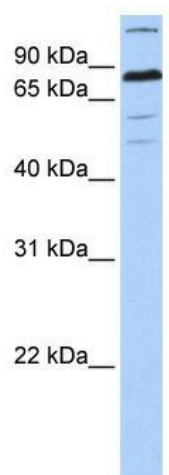
ZNF700 Rabbit Polyclonal Antibody

Product data:

Product Type:	Primary Antibodies
Applications:	WB
Recommended Dilution:	WB
Reactivity:	Human
Host:	Rabbit
Isotype:	IgG
Clonality:	Polyclonal
Immunogen:	The immunogen for anti-ZNF700 antibody: synthetic peptide directed towards the C terminal of human ZNF700. Synthetic peptide located within the following region: CKECEKAFCKFSSFQIHERKHRGEEKPYECKHCGNGFTSAKILQIHARTHI
Formulation:	Liquid. Purified antibody supplied in 1x PBS buffer with 0.09% (w/v) sodium azide and 2% sucrose.
Concentration:	lot specific
Purification:	Affinity Purified
Conjugation:	Unconjugated
Storage:	Store at -20°C as received.
Stability:	Stable for 12 months from date of receipt.
Predicted Protein Size:	86 kDa
Gene Name:	zinc finger protein 700
Database Link:	NP_653167 Entrez Gene 90592 Human Q9H0M5
Background:	ZNF700 belongs to the krueppel C2H2-type zinc-finger protein family. It contains 18 C2H2-type zinc fingers and 1 KRAB domain. ZNF700 may be involved in transcriptional regulation.
Synonyms:	DKFZp43411610
Note:	Immunogen Sequence Homology: Human: 100%; Rat: 92%; Pig: 86%; Horse: 86%; Mouse: 86%; Bovine: 86%; Rabbit: 86%; Guinea pig: 86%



[View online »](#)

Product images:

WB Suggested Anti-ZNF700 Antibody Titration:
0.2-1 ug/ml; Positive Control: 721_B cell lysate