

## Product datasheet for **TA339793**

### YY1AP1 Rabbit Polyclonal Antibody

#### Product data:

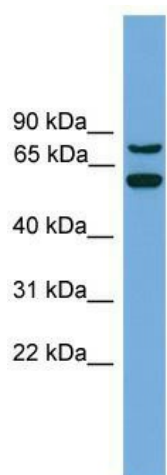
Product Type:	Primary Antibodies
Applications:	WB
Recommended Dilution:	WB
Reactivity:	Human
Host:	Rabbit
Isotype:	IgG
Clonality:	Polyclonal
Immunogen:	The immunogen for anti-YY1AP1 antibody: synthetic peptide directed towards the middle region of human YY1AP1. Synthetic peptide located within the following region: WTVVKTEEGRQALEPLPQGIQESLNNSSPGDLEEYVKMEPEDATEEISGF
Formulation:	Liquid. Purified antibody supplied in 1x PBS buffer with 0.09% (w/v) sodium azide and 2% sucrose. <i>Note that this product is shipped as lyophilized powder to China customers.</i>
Concentration:	lot specific
Purification:	Affinity Purified
Conjugation:	Unconjugated
Storage:	Store at -20°C as received.
Stability:	Stable for 12 months from date of receipt.
Predicted Protein Size:	83 kDa
Gene Name:	YY1 associated protein 1
Database Link:	<a href="#">NP_620830</a> <a href="#">Entrez Gene 55249 Human</a> <a href="#">Q9H869</a>
Background:	The encoded gene product presumably interacts with YY1 protein; however, its exact function is not known. Alternative splicing results in multiple transcript variants encoding different isoforms.
Synonyms:	HCCA1; HCCA2; YAP; YY1AP



[View online »](#)

Note: Immunogen Sequence Homology: Human: 100%; Horse: 86%

### Product images:



WB Suggested Anti-YY1AP1 Antibody Titration:  
0.2-1 ug/ml; Positive Control: HeLa cell lysate  
YY1AP1 is supported by BioGPS gene expression  
data to be expressed in HeLa