

Product datasheet for **TA339791**

ZMYND19 Rabbit Polyclonal Antibody

Product data:

| | |
|-------------------------|---|
| Product Type: | Primary Antibodies |
| Applications: | WB |
| Recommended Dilution: | WB |
| Reactivity: | Human |
| Host: | Rabbit |
| Isotype: | IgG |
| Clonality: | Polyclonal |
| Immunogen: | The immunogen for anti-ZMYND19 antibody: synthetic peptide directed towards the middle region of human ZMYND19. Synthetic peptide located within the following region: GWRPKAEETSSKQREQSLYLWLAIQQLPTDPIEEQFPVLNVTRYYNANGDV |
| Formulation: | Liquid. Purified antibody supplied in 1x PBS buffer with 0.09% (w/v) sodium azide and 2% sucrose. |
| Concentration: | lot specific |
| Purification: | Affinity Purified |
| Conjugation: | Unconjugated |
| Storage: | Store at -20°C as received. |
| Stability: | Stable for 12 months from date of receipt. |
| Predicted Protein Size: | 26 kDa |
| Gene Name: | zinc finger MYND-type containing 19 |
| Database Link: | NP_612471 Entrez Gene 116225 Human Q96E35 |



[View online »](#)

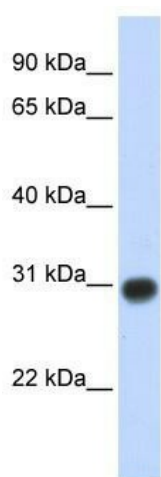
Background: ZMYND19 is a MYND zinc finger domain-containing protein that binds to the C terminus of melanin-concentrating hormone receptor-1 (MCHR1; MIM 601751), and to the N termini of alpha-tubulin (TUBA1; MIM 191110), and beta-tubulin (TUBB; MIM 191130). ZMYND19 is a MYND zinc finger domain-containing protein that binds to the C terminus of melanin-concentrating hormone receptor-1 (MCHR1; MIM 601751) (Bachner et al., 2002 [PubMed 12208518]), and to the N termini of alpha-tubulin (TUBA1; MIM 191110), and beta-tubulin (TUBB; MIM 191130) (Francke et al., 2005 [PubMed 16039987]). [supplied by OMIM]. PRIMARYREFSEQ_SPAN PRIMARY_IDENTIFIER PRIMARY_SPAN COMP 1-5 BU147462.1 1-5 6-1371 AJ298882.2 14-1379

Synonyms: MIZIP

Note: Immunogen Sequence Homology: Dog: 100%; Pig: 100%; Rat: 100%; Horse: 100%; Human: 100%; Mouse: 100%; Guinea pig: 100%; Bovine: 86%

Protein Families: Druggable Genome

Product images:



WB Suggested Anti-ZMYND19 Antibody Titration:
0.2-1 ug/ml; ELISA Titer: 1: 1562500; Positive
Control: Transfected 293T