

Product datasheet for **TA339790**

C19orf2 (URI1) Rabbit Polyclonal Antibody

Product data:

Product Type:	Primary Antibodies
Applications:	WB
Recommended Dilution:	WB
Reactivity:	Human
Host:	Rabbit
Isotype:	IgG
Clonality:	Polyclonal
Immunogen:	The immunogen for anti-C19orf2 antibody: synthetic peptide directed towards the middle region of human C19orf2. Synthetic peptide located within the following region: NGEYVPRKSILKSRSENSVCSDTSESSAAEFDDRRGVLRISCEEATCS
Formulation:	Liquid. Purified antibody supplied in 1x PBS buffer with 0.09% (w/v) sodium azide and 2% sucrose. <i>Note that this product is shipped as lyophilized powder to China customers.</i>
Concentration:	lot specific
Purification:	Affinity Purified
Conjugation:	Unconjugated
Storage:	Store at -20°C as received.
Stability:	Stable for 12 months from date of receipt.
Predicted Protein Size:	55 kDa
Gene Name:	URI1 prefoldin-like chaperone
Database Link:	NP_604431 Entrez Gene 8725 Human O94763



[View online »](#)

Background:

The function of the C19orf2 protein remains unknown. The protein encoded by this gene binds to RNA polymerase II subunit 5 (RPB5) and negatively modulates transcription through its binding to RPB5. The encoded protein seems to have inhibitory effects on various types of activated transcription, but it requires the RPB5-binding region. This protein acts as a corepressor. It is suggested that it may require signaling processes for its function or that it negatively modulates genes in the chromatin structure. Two alternatively spliced transcript variants encoding different isoforms have been described for this gene.

Synonyms:

FLJ10575; NNX3; RMP; URI

Note:

Immunogen Sequence Homology: Human: 100%; Rabbit: 100%; Pig: 93%; Bovine: 93%; Guinea pig: 93%; Dog: 86%; Horse: 86%; Rat: 80%; Mouse: 79%

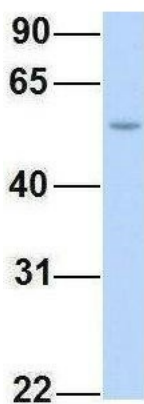
Protein Families:

Transcription Factors

Product images:

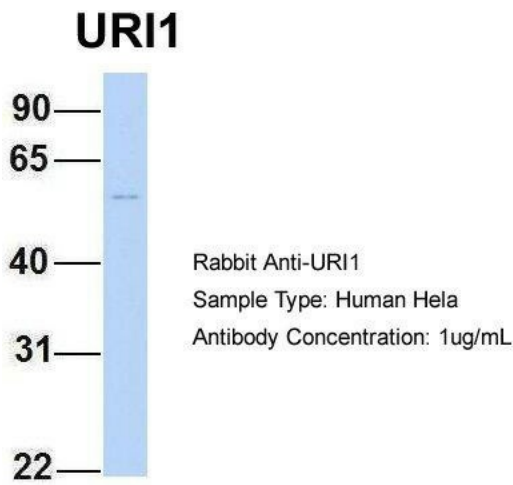

WB Suggested Anti-URI1 Antibody Titration: 0.2-1 ug/ml; Positive Control: Human Muscle

URI1

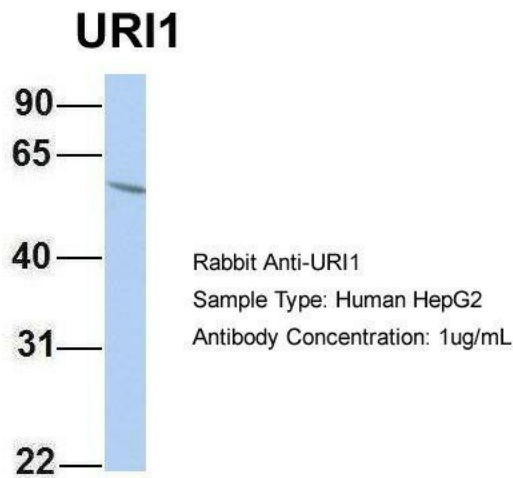


Rabbit Anti-URI1
Sample Type: Human Fetal Lung
Antibody Concentration: 1ug/mL

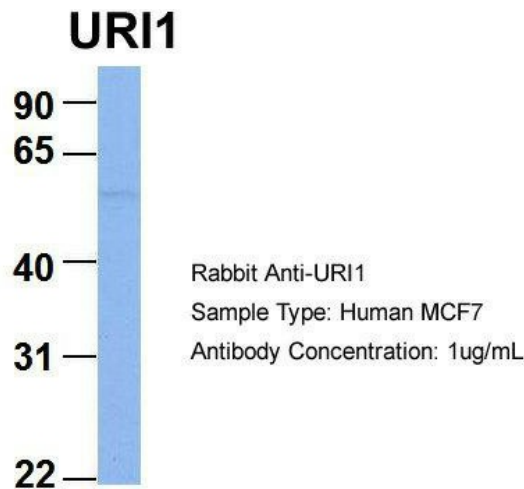
Host: Rabbit; Target Name: URI1; Sample Tissue: Human Fetal Lung; Antibody Dilution: 1.0 ug/ml



Host: Rabbit; Target Name: URI1; Sample Tissue: HeLa; Antibody Dilution: 1.0 ug/ml There is BioGPS gene expression data showing that URI1 is expressed in HeLa



Host: Rabbit; Target Name: URI1; Sample Tissue: HepG2; Antibody Dilution: 1.0 ug/ml There is BioGPS gene expression data showing that URI1 is expressed in HepG2



Host: Rabbit; Target Name: URI1; Sample Tissue: MCF7; Antibody Dilution: 1.0 ug/ml There is BioGPS gene expression data showing that URI1 is expressed in MCF7