

## Product datasheet for **TA339789**

### ZNF678 Rabbit Polyclonal Antibody

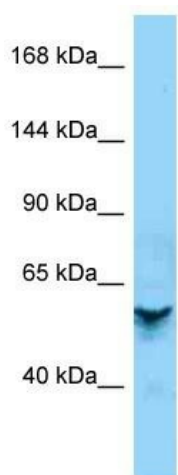
#### Product data:

Product Type:	Primary Antibodies
Applications:	WB
Recommended Dilution:	WB
Reactivity:	Human
Host:	Rabbit
Isotype:	IgG
Clonality:	Polyclonal
Immunogen:	The immunogen for Anti-ZNF678 antibody is: synthetic peptide directed towards the middle region of Human ZNF678. Synthetic peptide located within the following region: FSNLTQHKRIHTGEKPYKCKECCAFNKFSNLTQHKRIHTGEKPYKCEEC
Formulation:	Liquid. Purified antibody supplied in 1x PBS buffer with 0.09% (w/v) sodium azide and 2% sucrose.
Concentration:	lot specific
Purification:	Affinity Purified
Conjugation:	Unconjugated
Storage:	Store at -20°C as received.
Stability:	Stable for 12 months from date of receipt.
Predicted Protein Size:	57 kDa
Gene Name:	zinc finger protein 678
Database Link:	<a href="#">NP_848644</a> <a href="#">Entrez Gene 339500 Human</a>
Background:	ZNF678 may be involved in transcriptional regulation.
Synonyms:	FLJ18355; FLJ22822; MGC15634; MGC42493
Note:	Immunogen Sequence Homology: Human: 100%; Dog: 85%; Bovine: 83%; Pig: 79%; Rat: 79%; Horse: 79%; Mouse: 79%; Rabbit: 79%; Guinea pig: 79%



[View online »](#)

## Product images:



Host: Rabbit  
Target Name: ZNF678  
Sample Tissue: OVCAR-3 Cell Lysate  
Antibody Dilution: 1.0 $\mu$ g/ml

Host: Rabbit; Target Name: ZNF678; Sample  
Tissue: OVCAR-3 Whole cell lysates; Antibody  
Dilution: 1.0  $\mu$ g/ml