

Product datasheet for **TA339788**

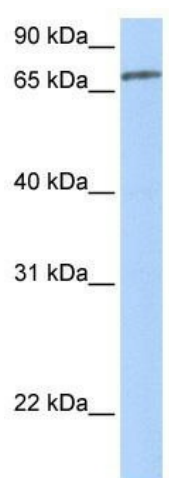
ZNF418 Rabbit Polyclonal Antibody

Product data:

Product Type:	Primary Antibodies
Applications:	WB
Recommended Dilution:	WB
Reactivity:	Human
Host:	Rabbit
Isotype:	IgG
Clonality:	Polyclonal
Immunogen:	The immunogen for anti-ZNF418 antibody: synthetic peptide directed towards the N terminal of human ZNF418. Synthetic peptide located within the following region: HRCEAWGNKLYDSSNRPHQNQYLGEKPYRSSVEEALFVKRCKFHVSEESS
Formulation:	Liquid. Purified antibody supplied in 1x PBS buffer with 0.09% (w/v) sodium azide and 2% sucrose. <i>Note that this product is shipped as lyophilized powder to China customers.</i>
Concentration:	lot specific
Purification:	Affinity Purified
Conjugation:	Unconjugated
Storage:	Store at -20°C as received.
Stability:	Stable for 12 months from date of receipt.
Predicted Protein Size:	78 kDa
Gene Name:	zinc finger protein 418
Database Link:	NP_597717 Entrez Gene 147686 Human Q8TF45
Background:	ZNF418 belongs to the krueppel C2H2-type zinc-finger protein family. It contains 16 C2H2-type zinc fingers and 1 KRAB domain. ZNF418 is a transcriptional repressor.
Synonyms:	FLJ31551; KIAA1956; MGC138449
Note:	Immunogen Sequence Homology: Human: 100%



[View online »](#)

Product images:

WB Suggested Anti-ZNF418 Antibody Titration:
0.2-1 ug/ml; Positive Control: MCF7 cell lysate