

Product datasheet for **TA339785**

SUHW1 (ZNF280A) Rabbit Polyclonal Antibody

Product data:

Product Type:	Primary Antibodies
Applications:	WB
Recommended Dilution:	WB
Reactivity:	Human
Host:	Rabbit
Isotype:	IgG
Clonality:	Polyclonal
Immunogen:	The immunogen for anti-ZNF280A antibody: synthetic peptide directed towards the C terminal of human ZNF280A. Synthetic peptide located within the following region: WRHSRRRVLQCSKCRLQLTLKEEIEHKTKDHQTFKKPEQLQGFPRETKV
Formulation:	Liquid. Purified antibody supplied in 1x PBS buffer with 0.09% (w/v) sodium azide and 2% sucrose. <i>Note that this product is shipped as lyophilized powder to China customers.</i>
Concentration:	lot specific
Purification:	Affinity Purified
Conjugation:	Unconjugated
Storage:	Store at -20°C as received.
Stability:	Stable for 12 months from date of receipt.
Predicted Protein Size:	60 kDa
Gene Name:	zinc finger protein 280A
Database Link:	NP_542778 Entrez Gene 129025 Human P59817



[View online »](#)

Background:

The predicted protein ZNF280A is similar to Drosophila suppressor of hairy wing protein, a leucine zipper protein which represses the function of transcriptional enhancers of the gypsy retrotransposon. ZNF280A may function as a transcription factor. This gene was predicted both by automated computational analysis and by similarity to a Drosophila gene and to predicted genes in other species (sheep, chimp, dog, cow). The predicted protein of this gene is similar to Drosophila suppressor of hairy wing protein, a leucine zipper protein which represses the function of transcriptional enhancers of the gypsy retrotransposon.

Synonyms:

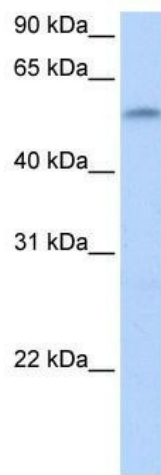
3 OY11.1; 3'OY11.1; SUHW1; ZNF280; ZNF636

Note:

Immunogen Sequence Homology: Human: 100%; Pig: 86%; Guinea pig: 86%; Rat: 79%

Protein Families:

Druggable Genome, Transcription Factors

Product images:

WB Suggested Anti-ZNF280A Antibody Titration:
0.2-1 ug/ml; Positive Control: Human brain