

Product datasheet for **TA339784**

TCEAL2 Rabbit Polyclonal Antibody

Product data:

Product Type:	Primary Antibodies
Applications:	WB
Recommended Dilution:	WB
Reactivity:	Human
Host:	Rabbit
Isotype:	IgG
Clonality:	Polyclonal
Immunogen:	The immunogen for anti-TCEAL2 antibody: synthetic peptide directed towards the N terminal of human TCEAL2. Synthetic peptide located within the following region: MEKLFNENEGMPSNQGKIDNEEQPPHEGKPEVACILEDKKLENEGNTENT
Formulation:	Liquid. Purified antibody supplied in 1x PBS buffer with 0.09% (w/v) sodium azide and 2% sucrose.
Concentration:	lot specific
Purification:	Affinity Purified
Conjugation:	Unconjugated
Storage:	Store at -20°C as received.
Stability:	Stable for 12 months from date of receipt.
Predicted Protein Size:	26 kDa
Gene Name:	transcription elongation factor A like 2
Database Link:	NP_525129 Entrez Gene 140597 Human Q9H3H9



[View online »](#)

Background:

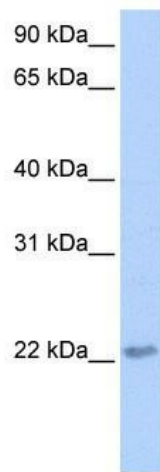
TCEAL2 is a member of the transcription elongation factor A (SII)-like (TCEAL) gene family. Members of this family contain TFA domains and may function as nuclear phosphoproteins that modulate transcription in a promoter context-dependent manner. This gene encodes a member of the transcription elongation factor A (SII)-like (TCEAL) gene family. Members of this family contain TFA domains and may function as nuclear phosphoproteins that modulate transcription in a promoter context-dependent manner. Multiple family members are located on the X chromosome.

Synonyms:

my048; MY0876G05; WEX1

Note:

Immunogen Sequence Homology: Human: 100%

Product images:

WB Suggested Anti-TCEAL2 Antibody Titration:
0.2-1 ug/ml; Positive Control: HepG2 cell lysate