

Product datasheet for TA339781

Scratch 2 (SCRT2) Rabbit Polyclonal Antibody

Product data:

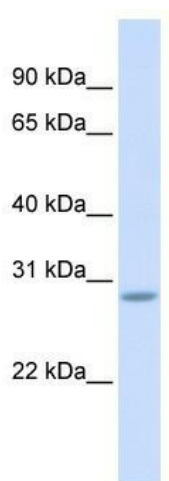
Product Type:	Primary Antibodies
Applications:	WB
Recommended Dilution:	WB
Reactivity:	Human
Host:	Rabbit
Isotype:	IgG
Clonality:	Polyclonal
Immunogen:	The immunogen for anti-SCRT2 antibody: synthetic peptide directed towards the middle region of human SCRT2. Synthetic peptide located within the following region: HMQTHSAFKHYRCRQCDKSFALKSYLHKHCEAACAKAAEPPPPTPAGPAS
Formulation:	Liquid. Purified antibody supplied in 1x PBS buffer with 0.09% (w/v) sodium azide and 2% sucrose. <i>Note that this product is shipped as lyophilized powder to China customers.</i>
Concentration:	lot specific
Purification:	Affinity Purified
Conjugation:	Unconjugated
Storage:	Store at -20°C as received.
Stability:	Stable for 12 months from date of receipt.
Predicted Protein Size:	32 kDa
Gene Name:	scratch family transcriptional repressor 2
Database Link:	NP_149120 Entrez Gene 85508 Human Q9NQ03
Background:	SCRT2 belongs to the snail C2H2-type zinc-finger protein family. It contains 5 C2H2-type zinc fingers. SCRT2 may be involved in transcriptional regulation.
Synonyms:	ZNF898B



[View online »](#)

Note: Immunogen Sequence Homology: Human: 100%; Yeast: 100%; Dog: 92%; Rat: 85%; Pig: 79%; Guinea pig: 79%

Product images:



WB Suggested Anti-SCRT2 Antibody Titration: 0.2-1 ug/ml; ELISA Titer: 1: 62500; Positive Control: Human Muscle