

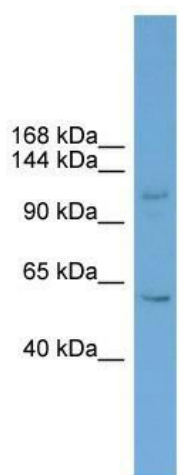
Product datasheet for **TA339780**

ZNF628 Rabbit Polyclonal Antibody

Product data:

Product Type:	Primary Antibodies
Applications:	WB
Recommended Dilution:	WB
Reactivity:	Human
Host:	Rabbit
Isotype:	IgG
Clonality:	Polyclonal
Immunogen:	The immunogen for anti-ZNF628 antibody: synthetic peptide directed towards the middle region of human ZNF628. Synthetic peptide located within the following region: LSGADGEQTRLVCQEVETLPPGLTEPPATGPPGQKLLIIRSAPATELLDS
Formulation:	Liquid. Purified antibody supplied in 1x PBS buffer with 0.09% (w/v) sodium azide and 2% sucrose.
Concentration:	lot specific
Purification:	Affinity Purified
Conjugation:	Unconjugated
Storage:	Store at -20°C as received.
Stability:	Stable for 12 months from date of receipt.
Predicted Protein Size:	110 kDa
Gene Name:	zinc finger protein 628
Database Link:	NP_149104 Entrez Gene 89887 Human Q5EBL2
Background:	ZNF628 is the transcription activator. Binds DNA on GT-box consensus sequence 5'-TTGGTT-3'.
Synonyms:	ZEC; Zfp628
Note:	Immunogen Sequence Homology: Human: 100%; Pig: 86%; Bovine: 86%; Guinea pig: 86%; Rat: 79%; Mouse: 79%


[View online »](#)

Product images:


WB Suggested Anti-ZNF628 Antibody Titration:
0.2-1 ug/ml; Positive Control: Jurkat cell lysate