

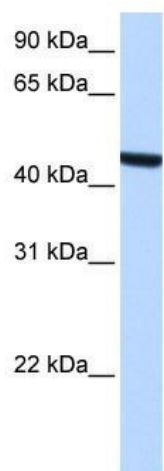
## Product datasheet for **TA339779**

### ZCCHC3 Rabbit Polyclonal Antibody

#### Product data:

Product Type:	Primary Antibodies
Applications:	WB
Recommended Dilution:	WB
Reactivity:	Human
Host:	Rabbit
Isotype:	IgG
Clonality:	Polyclonal
Immunogen:	The immunogen for anti-ZCCHC3 antibody: synthetic peptide directed towards the middle region of human ZCCHC3. Synthetic peptide located within the following region: RDFVVGALILRSIGMDPSDIYAVIQPSREFDVSFRSAEKLALFLRVYE
Formulation:	Liquid. Purified antibody supplied in 1x PBS buffer with 0.09% (w/v) sodium azide and 2% sucrose.
Concentration:	lot specific
Purification:	Affinity Purified
Conjugation:	Unconjugated
Storage:	Store at -20°C as received.
Stability:	Stable for 12 months from date of receipt.
Predicted Protein Size:	43 kDa
Gene Name:	zinc finger CCHC-type containing 3
Database Link:	<a href="#">NP_149080</a> <a href="#">Entrez Gene 85364 Human</a> <a href="#">Q9NUD5</a>
Background:	ZCCHC3 contains 3 CCHC-type zinc fingers. The exact function of ZCCHC3 remains unknown.
Synonyms:	C20orf99
Note:	Immunogen Sequence Homology: Dog: 100%; Pig: 100%; Rat: 100%; Horse: 100%; Human: 100%; Mouse: 100%; Bovine: 100%; Rabbit: 100%; Guinea pig: 100%


[View online »](#)

**Product images:**


WB Suggested Anti-ZCCHC3 Antibody Titration:  
0.2-1 ug/ml; Positive Control: HepG2 cell lysate