

Product datasheet for **TA339778**

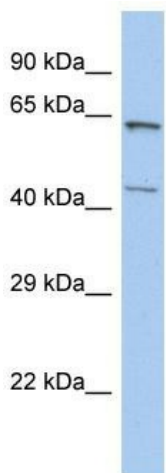
ZCCHC3 Rabbit Polyclonal Antibody

Product data:

Product Type:	Primary Antibodies
Applications:	WB
Recommended Dilution:	WB
Reactivity:	Human
Host:	Rabbit
Isotype:	IgG
Clonality:	Polyclonal
Immunogen:	The immunogen for Anti-ZCCHC3 antibody is: synthetic peptide directed towards the N-terminal region of Human ZCCHC3. Synthetic peptide located within the following region: EKKGEFREPRPPRREEESGGGGGSAGLGGPAGLAAPDLGDFPPAGRDPK
Formulation:	Liquid. Purified antibody supplied in 1x PBS buffer with 0.09% (w/v) sodium azide and 2% sucrose.
Concentration:	lot specific
Purification:	Affinity Purified
Conjugation:	Unconjugated
Storage:	Store at -20°C as received.
Stability:	Stable for 12 months from date of receipt.
Predicted Protein Size:	44 kDa
Gene Name:	zinc finger CCHC-type containing 3
Database Link:	NP_149080 Entrez Gene 85364 Human Q9NUD5
Background:	ZCCHC3 contains 3 CCHC-type zinc fingers. The exact function of ZCCHC3 remains unknown.
Synonyms:	C20orf99
Note:	Immunogen Sequence Homology: Human: 100%; Pig: 85%; Bovine: 85%



[View online »](#)

Product images:


Host: Rabbit
 Target Name: ZCCHC3
 Sample Tissue: HT1080 Cell Lysate
 Antibody Dilution: 1.0µg/ml

Host: Rabbit; Target Name: ZCCHC3; Sample
 Tissue: HT1080 Whole Cell lysates; Antibody
 Dilution: 1.0 ug/ml