

Product datasheet for **TA339777**

CIP29 (SARNP) Rabbit Polyclonal Antibody

Product data:

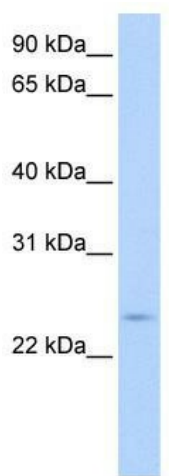
Product Type:	Primary Antibodies
Applications:	WB
Recommended Dilution:	WB
Reactivity:	Human
Host:	Rabbit
Isotype:	IgG
Clonality:	Polyclonal
Immunogen:	The immunogen for anti-CIP29 antibody: synthetic peptide directed towards the C terminal of human CIP29. Synthetic peptide located within the following region: VSSISRKSEDEKLKRRKERFGIVTSSAGTGTTEDEAKKRKRAERFGIA
Formulation:	Liquid. Purified antibody supplied in 1x PBS buffer with 0.09% (w/v) sodium azide and 2% sucrose. <i>Note that this product is shipped as lyophilized powder to China customers.</i>
Concentration:	lot specific
Purification:	Affinity Purified
Conjugation:	Unconjugated
Storage:	Store at -20°C as received.
Stability:	Stable for 12 months from date of receipt.
Predicted Protein Size:	24 kDa
Gene Name:	SAP domain containing ribonucleoprotein
Database Link:	NP_149073 Entrez Gene 84324 Human P82979
Background:	CIP29 physically and functionally associates with DDX39, suggesting their cooperation in the RNA metabolism. CIP29 appears to be a new cytokine regulated protein involved in normal and cancer cell proliferation.
Synonyms:	CIP29; HCC1; HSPC316; THO1



[View online »](#)

Note: Immunogen Sequence Homology: Dog: 100%; Pig: 100%; Rat: 100%; Horse: 100%; Human: 100%; Mouse: 100%; Bovine: 100%; Rabbit: 100%; Guinea pig: 100%; Yeast: 83%; Zebrafish: 83%

Product images:



WB Suggested Anti-SARNP Antibody Titration:
0.2-1 ug/ml; Positive Control: HepG2 cell lysate