

Product datasheet for **TA339776**

STK31 Rabbit Polyclonal Antibody

Product data:

Product Type:	Primary Antibodies
Applications:	WB
Recommended Dilution:	WB
Reactivity:	Human
Host:	Rabbit
Isotype:	IgG
Clonality:	Polyclonal
Immunogen:	The immunogen for anti-STK31 antibody: synthetic peptide directed towards the N terminal of human STK31. Synthetic peptide located within the following region: SPIPLWGHRSNQSTFSRPKGHLSEKMTLDLKDENDAGNLITFPKESLAVG
Formulation:	Liquid. Purified antibody supplied in 1x PBS buffer with 0.09% (w/v) sodium azide and 2% sucrose. <i>Note that this product is shipped as lyophilized powder to China customers.</i>
Concentration:	lot specific
Purification:	Affinity Purified
Conjugation:	Unconjugated
Storage:	Store at -20°C as received.
Stability:	Stable for 12 months from date of receipt.
Predicted Protein Size:	113 kDa
Gene Name:	serine/threonine kinase 31
Database Link:	NP_116562 Entrez Gene 56164 Human Q9BXU1
Background:	This gene is similar to a mouse gene that encodes a putative protein kinase with a tudor domain, and shows testis-specific expression. Alternative splicing results in multiple transcript variants encoding different isoforms.
Synonyms:	SGK396; TDRD8

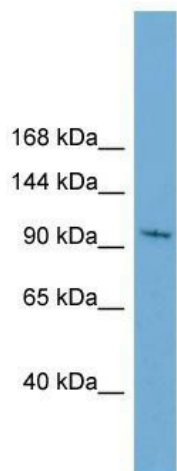


[View online »](#)

Note: Immunogen Sequence Homology: Pig: 100%; Rat: 100%; Human: 100%; Mouse: 100%; Rabbit: 92%; Dog: 85%; Horse: 85%; Bovine: 77%

Protein Families: Druggable Genome, Protein Kinase

Product images:



WB Suggested Anti-STK31 Antibody Titration: 0.2-1 ug/ml; Positive Control: HepG2 cell lysate