

Product datasheet for TA339775

TCEAL3 Rabbit Polyclonal Antibody

Product data:

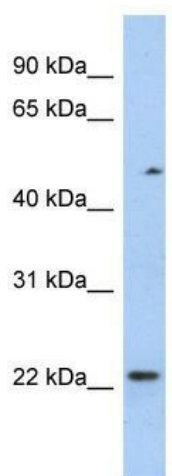
Product Type:	Primary Antibodies
Applications:	WB
Recommended Dilution:	WB
Reactivity:	Human
Host:	Rabbit
Isotype:	IgG
Clonality:	Polyclonal
Immunogen:	The immunogen for anti-TCEAL3 antibody: synthetic peptide directed towards the N terminal of human TCEAL3. Synthetic peptide located within the following region: MEKPYNKNEGNLENEGKPEDEVEPDDEGKSDEEEKPDVEGKTECEGKRED
Formulation:	Liquid. Purified antibody supplied in 1x PBS buffer with 0.09% (w/v) sodium azide and 2% sucrose.
Concentration:	lot specific
Purification:	Affinity Purified
Conjugation:	Unconjugated
Storage:	Store at -20°C as received.
Stability:	Stable for 12 months from date of receipt.
Predicted Protein Size:	22 kDa
Gene Name:	transcription elongation factor A like 3
Database Link:	NP_116315 Entrez Gene 85012 Human Q969E4
Background:	TCEAL3 may be involved in transcriptional regulation. This gene encodes a member of the transcription elongation factor A (SII)-like (TCEAL) gene family. Members of this family contain TFA domains and may function as nuclear phosphoproteins that modulate transcription in a promoter context-dependent manner. Multiple family members are located on the X chromosome. Alternative splicing results in multiple transcript variants encoding a single isoform.


[View online »](#)

Synonyms: WEX8

Note: Immunogen Sequence Homology: Human: 100%; Pig: 92%; Rat: 92%; Mouse: 92%; Horse: 79%; Bovine: 79%; Rabbit: 77%

Product images:



WB Suggested Anti-TCEAL3 Antibody Titration:
0.2-1 ug/ml; ELISA Titer: 1: 312500; Positive
Control: HT1080 cell lysate