

## Product datasheet for **TA339773**

### Zmat1 Rabbit Polyclonal Antibody

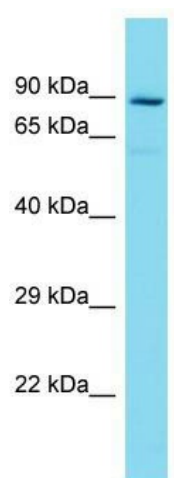
#### Product data:

Product Type:	Primary Antibodies
Applications:	WB
Recommended Dilution:	WB
Reactivity:	Mouse
Host:	Rabbit
Isotype:	IgG
Clonality:	Polyclonal
Immunogen:	The immunogen for Anti-Zmat1 antibody is synthetic peptide directed towards the middle region of Mouse Zmat1. Synthetic peptide located within the following region: HNLPAESKTYDSFQDELEDYIKGQKARGLDPNTSFRRMSESYRYRDQRYR
Formulation:	Liquid. Purified antibody supplied in 1x PBS buffer with 0.09% (w/v) sodium azide and 2% sucrose.
Concentration:	lot specific
Purification:	Affinity Purified
Conjugation:	Unconjugated
Storage:	Store at -20°C as received.
Stability:	Stable for 12 months from date of receipt.
Predicted Protein Size:	76 kDa
Gene Name:	zinc finger, matrin type 1
Database Link:	<a href="#">NP_780655</a> <a href="#">Entrez Gene 215693 Mouse</a>
Background:	The function of this protein remains unknown.
Synonyms:	KIAA1789; MGC176597; MGC176728
Note:	Immunogen Sequence Homology: Dog: 100%; Pig: 100%; Rat: 100%; Horse: 100%; Human: 100%; Mouse: 100%; Bovine: 100%; Rabbit: 100%; Guinea pig: 86%; Zebrafish: 82%



[View online »](#)

## Product images:



Host: Rabbit; Target Name: Zmat1; Sample  
Tissue: Mouse Thymus lysates; Antibody Dilution:  
1.0 ug/ml