

Product datasheet for **TA339772**

L3MBTL3 Rabbit Polyclonal Antibody

Product data:

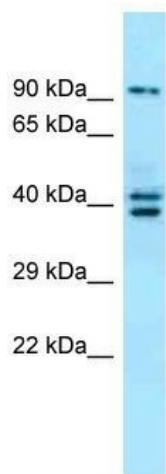
Product Type:	Primary Antibodies
Applications:	WB
Recommended Dilution:	WB
Reactivity:	Human
Host:	Rabbit
Isotype:	IgG
Clonality:	Polyclonal
Immunogen:	The immunogen for anti-L3MBTL3 antibody: synthetic peptide directed towards the N terminal of human L3MBTL3. Synthetic peptide located within the following region: MTESASSTSGQEFDVFSVMDWKDGVGTLPGSDLKFRVNEFGALEVITDEN
Formulation:	Liquid. Purified antibody supplied in 1x PBS buffer with 0.09% (w/v) sodium azide and 2% sucrose. <i>Note that this product is shipped as lyophilized powder to China customers.</i>
Concentration:	lot specific
Purification:	Affinity Purified
Conjugation:	Unconjugated
Storage:	Store at -20°C as received.
Stability:	Stable for 12 months from date of receipt.
Predicted Protein Size:	86 kDa
Gene Name:	l(3)mbt-like 3 (Drosophila)
Database Link:	NP_001007103 Entrez Gene 84456 Human Q96JM7
Background:	L3MBTL3 is a putative Polycomb group (PcG) protein. PcG proteins maintain the transcriptionally repressive state of genes, probably via a modification of chromatin, rendering it heritably changed in its expressibility. L3MBTL3 is required for normal maturation of myeloid progenitor cells.
Synonyms:	MBT-1; MBT1



[View online »](#)

Note: Immunogen Sequence Homology: Pig: 100%; Rat: 100%; Human: 100%; Mouse: 100%; Bovine: 100%; Rabbit: 100%; Guinea pig: 100%; Dog: 93%; Horse: 93%

Product images:



WB Suggested Anti-L3MBTL3 Antibody Titration:
0.2-1 ug/ml; ELISA Titer: 1: 1562500; Positive
Control: PANC1 cell lysate