

Product datasheet for **TA339771**

MGC13096 (PDCD2L) Rabbit Polyclonal Antibody

Product data:

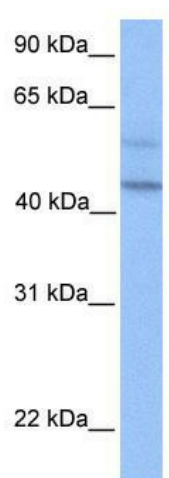
Product Type:	Primary Antibodies
Applications:	WB
Recommended Dilution:	WB
Reactivity:	Human
Host:	Rabbit
Isotype:	IgG
Clonality:	Polyclonal
Immunogen:	The immunogen for anti-PDCD2L antibody: synthetic peptide directed towards the N terminal of human PDCD2L. Synthetic peptide located within the following region: FACACPGCSTGGARSWKVFERSQCLQVPEREAQDAQKQGNSLAAEDWCEGA
Formulation:	Liquid. Purified antibody supplied in 1x PBS buffer with 0.09% (w/v) sodium azide and 2% sucrose. <i>Note that this product is shipped as lyophilized powder to China customers.</i>
Concentration:	lot specific
Purification:	Affinity Purified
Conjugation:	Unconjugated
Storage:	Store at -20°C as received.
Stability:	Stable for 12 months from date of receipt.
Predicted Protein Size:	39 kDa
Gene Name:	programmed cell death 2-like
Database Link:	NP_115722 Entrez Gene 84306 Human Q9BRP1
Background:	Over expression of PDCD2L attenuates TNF-alpha release in Daudi cells. PDCD2L over-expression restrained proliferation of HEK293T cells. DNA/flow cytometry analysis showed that the over-expression of PDCD2L severely delays cell cycle progression at S phase. These all suggest that PDCD2L might play a role in apoptosis.
Synonyms:	MGC13096



[View online »](#)

Note: Immunogen Sequence Homology: Human: 100%

Product images:



WB Suggested Anti-PDCD2L Antibody Titration:
0.2-1 ug/ml; Positive Control: HeLa cell lysate