

Product datasheet for **TA339766**

ARID5B Rabbit Polyclonal Antibody

Product data:

| | |
|-------------------------|---|
| Product Type: | Primary Antibodies |
| Applications: | WB |
| Recommended Dilution: | WB |
| Reactivity: | Human |
| Host: | Rabbit |
| Isotype: | IgG |
| Clonality: | Polyclonal |
| Immunogen: | The immunogen for Anti-ARID5B antibody is: synthetic peptide directed towards the N-terminal region of Human ARID5B. Synthetic peptide located within the following region: FLPEDTPQGRNSDHGEDEVIAVSEKIVKLEDLVKWVHSDFSKWRCGFHA |
| Formulation: | Liquid. Purified antibody supplied in 1x PBS buffer with 0.09% (w/v) sodium azide and 2% sucrose. <i>Note that this product is shipped as lyophilized powder to China customers.</i> |
| Concentration: | lot specific |
| Purification: | Affinity Purified |
| Conjugation: | Unconjugated |
| Storage: | Store at -20°C as received. |
| Stability: | Stable for 12 months from date of receipt. |
| Predicted Protein Size: | 34 kDa |
| Gene Name: | AT-rich interaction domain 5B |
| Database Link: | NP_115575 Entrez Gene 84159 Human Q14865 |



[View online »](#)

Background:

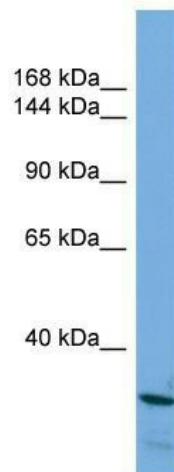
This gene encodes a member of the AT-rich interaction domain (ARID) family of DNA binding proteins. The encoded protein forms a histone H3K9Me2 demethylase complex with PHD finger protein 2 and regulates the transcription of target genes involved in adipogenesis and liver development. This gene also plays a role in cell growth and differentiation of B-lymphocyte progenitors, and single nucleotide polymorphisms in this gene are associated with acute lymphoblastic leukemia. Alternatively spliced transcript variants encoding multiple isoforms have been observed for this gene.

Synonyms:

DESRT; MRF-2; MRF2

Note:

Immunogen Sequence Homology: Dog: 100%; Pig: 100%; Rat: 100%; Horse: 100%; Human: 100%; Mouse: 100%; Bovine: 100%; Rabbit: 100%; Guinea pig: 100%

Product images:

Host: Rabbit; Target Name: ARID5B; Sample Tissue: HepG2 Whole Cell lysates; Antibody Dilution: 1.0 ug/ml; ARID5B is supported by BioGPS gene expression data to be expressed in HepG2