

Product datasheet for **TA339765**

NRIP2 Rabbit Polyclonal Antibody

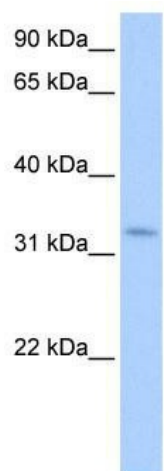
Product data:

Product Type:	Primary Antibodies
Applications:	WB
Recommended Dilution:	WB
Reactivity:	Human
Host:	Rabbit
Isotype:	IgG
Clonality:	Polyclonal
Immunogen:	The immunogen for anti-NRIP2 antibody: synthetic peptide directed towards the N terminal of human NRIP2. Synthetic peptide located within the following region: HLSQQRRLKQATQFLHKDSADLLPLDSLKRLGTSKDLQPRSVIQRRLVEG
Formulation:	Liquid. Purified antibody supplied in 1x PBS buffer with 0.09% (w/v) sodium azide and 2% sucrose.
Concentration:	lot specific
Purification:	Affinity Purified
Conjugation:	Unconjugated
Storage:	Store at -20°C as received.
Stability:	Stable for 12 months from date of receipt.
Predicted Protein Size:	31 kDa
Gene Name:	nuclear receptor interacting protein 2
Database Link:	NP_113662 Entrez Gene 83714 Human Q9BQI9
Background:	NRIP2 down-regulates transcriptional activation by nuclear receptors such as NR1F2
Synonyms:	DKFZp761G1913
Note:	Immunogen Sequence Homology: Dog: 100%; Rat: 100%; Horse: 100%; Human: 100%; Mouse: 100%; Rabbit: 100%; Pig: 92%; Bovine: 92%; Zebrafish: 92%
Protein Families:	Druggable Genome



[View online »](#)

Product images:



WB Suggested Anti-NRIP2 Antibody Titration: 0.2-1 ug/ml; Positive Control: Human brain