

Product datasheet for **TA339764**

MED25 Rabbit Polyclonal Antibody

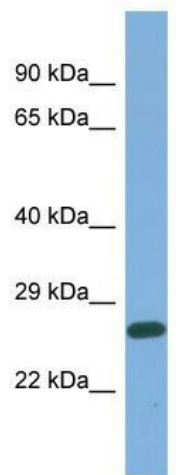
Product data:

| | |
|-------------------------|---|
| Product Type: | Primary Antibodies |
| Applications: | 10k-ChIP, WB |
| Recommended Dilution: | WB, CHIP |
| Reactivity: | Human |
| Host: | Rabbit |
| Isotype: | IgG |
| Clonality: | Polyclonal |
| Immunogen: | The immunogen for Anti-MED25 antibody is: synthetic peptide directed towards the C-terminal region of Human MED25. Synthetic peptide located within the following region: PPLLHPPPAQSWPAQLPPRAPLPGQMLLSGGPRGPVQPGLQPSVMEDDI |
| Formulation: | Liquid. Purified antibody supplied in 1x PBS buffer with 0.09% (w/v) sodium azide and 2% sucrose. <i>Note that this product is shipped as lyophilized powder to China customers.</i> |
| Concentration: | lot specific |
| Purification: | Affinity Purified |
| Conjugation: | Unconjugated |
| Storage: | Store at -20°C as received. |
| Stability: | Stable for 12 months from date of receipt. |
| Predicted Protein Size: | 25 kDa |
| Gene Name: | mediator complex subunit 25 |
| Database Link: | NP_112235 Entrez Gene 81857 Human Q71SY5 |
| Background: | The function of this protein remains unknown. |
| Synonyms: | ACID1; ARC92; CMT2B2; P78; PTOV2; TCBAP0758 |
| Note: | Immunogen Sequence Homology: Dog: 100%; Pig: 100%; Rat: 100%; Horse: 100%; Human: 100%; Mouse: 100%; Bovine: 100%; Rabbit: 93% |



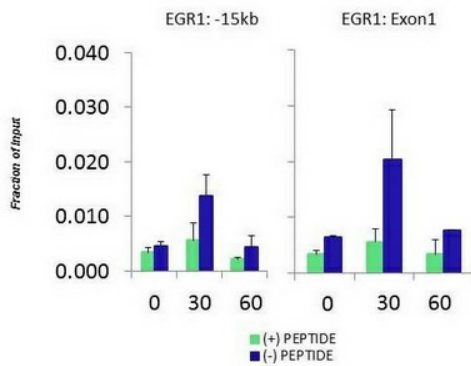
[View online »](#)

Product images:



Host: Rabbit; Target Name: MED25; Sample Tissue: OVCAR-3 Whole Cell lysates; Antibody Dilution: 1.0 ug/ml

HCT116 serum response
MED25
Matrix-ChIP



Quiescent human colon carcinoma HCT116 cultures were treated with 10% FBS for three time points (0, 15, 30min) or (0, 30, 60min) were used in Matrix-ChIP and real-time PCR assays at EGR1 gene (Exon1) and 15kb upstream site.