

## Product datasheet for TA339762

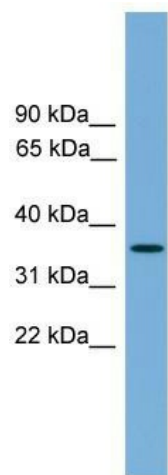
### Sprouty 4 (SPRY4) Rabbit Polyclonal Antibody

#### Product data:

<b>Product Type:</b>	Primary Antibodies
<b>Applications:</b>	WB
<b>Recommended Dilution:</b>	WB
<b>Reactivity:</b>	Human
<b>Host:</b>	Rabbit
<b>Isotype:</b>	IgG
<b>Clonality:</b>	Polyclonal
<b>Immunogen:</b>	The immunogen for anti-SPRY4 antibody: synthetic peptide directed towards the middle region of human SPRY4. Synthetic peptide located within the following region: LCYLPATGCVKLAQRGYDLRRPGCRCKHTNSVICKAASGDAKTSRPDKP
<b>Formulation:</b>	Liquid. Purified antibody supplied in 1x PBS buffer with 0.09% (w/v) sodium azide and 2% sucrose. <i>Note that this product is shipped as lyophilized powder to China customers.</i>
<b>Concentration:</b>	lot specific
<b>Purification:</b>	Affinity Purified
<b>Conjugation:</b>	Unconjugated
<b>Storage:</b>	Store at -20°C as received.
<b>Stability:</b>	Stable for 12 months from date of receipt.
<b>Predicted Protein Size:</b>	35 kDa
<b>Gene Name:</b>	sprouty RTK signaling antagonist 4
<b>Database Link:</b>	<a href="#">NP_112226</a> <a href="#">Entrez Gene 81848 Human</a> <a href="#">Q9C004</a>



<b>Background:</b>	SPRY4 is an inhibitor of the receptor-transduced mitogen-activated protein kinase (MAPK) signaling pathway. It is positioned upstream of RAS (see HRAS; MIM 190020) activation and impairs the formation of active GTP-RAS (Leeksma et al., 2002 [PubMed 12027893]).
<b>Synonyms:</b>	HHI7
<b>Note:</b>	Immunogen Sequence Homology: Human: 100%; Pig: 86%; Horse: 86%; Mouse: 86%; Bovine: 86%; Rabbit: 86%; Guinea pig: 86%; Rat: 79%
<b>Protein Pathways:</b>	Jak-STAT signaling pathway

**Product images:**

WB Suggested Anti-SPRY4 Antibody Titration:  
0.2-1 ug/ml; ELISA Titer: 1: 1562500; Positive  
Control: Hela cell lysate