

## Product datasheet for **TA339760**

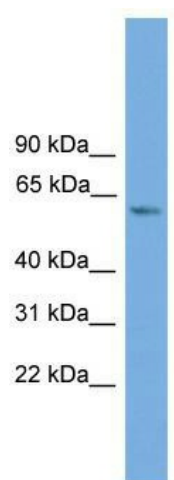
### **ZBTB46 Rabbit Polyclonal Antibody**

#### **Product data:**

Product Type:	Primary Antibodies
Applications:	WB
Recommended Dilution:	WB
Reactivity:	Human
Host:	Rabbit
Isotype:	IgG
Clonality:	Polyclonal
Immunogen:	The immunogen for anti-ZBTB46 antibody: synthetic peptide directed towards the middle region of human ZBTB46. Synthetic peptide located within the following region: DSSGDSAIASCHDGGSSYGKEDQEPKADGPDDVSSQPLWPGDVGYGPLRI
Formulation:	Liquid. Purified antibody supplied in 1x PBS buffer with 0.09% (w/v) sodium azide and 2% sucrose.
Concentration:	lot specific
Purification:	Affinity Purified
Conjugation:	Unconjugated
Storage:	Store at -20°C as received.
Stability:	Stable for 12 months from date of receipt.
Predicted Protein Size:	64 kDa
Gene Name:	zinc finger and BTB domain containing 46
Database Link:	<a href="#">NP_079500</a> <a href="#">Entrez Gene 140685 Human</a> <a href="#">Q86UZ6</a>
Background:	ZBTB46 contains 1 BTB (POZ) domain and 2 C2H2-type zinc fingers. ZBTB46 may be involved in transcriptional regulation.
Synonyms:	BTBD4; BZEL; dj583P15.7; dj583P15.8; RINZF; ZNF340
Note:	Immunogen Sequence Homology: Rat: 100%; Horse: 100%; Human: 100%; Mouse: 100%; Dog: 93%; Bovine: 85%; Rabbit: 79%



[View online »](#)

**Product images:**


WB Suggested Anti-ZBTB46 Antibody Titration:  
0.2-1 ug/ml; Positive Control: Jurkat cell lysate