

Product datasheet for **TA339759**

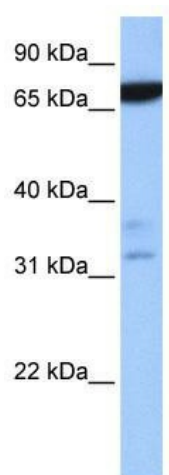
ZBTB46 Rabbit Polyclonal Antibody

Product data:

Product Type:	Primary Antibodies
Applications:	WB
Recommended Dilution:	WB
Reactivity:	Human
Host:	Rabbit
Isotype:	IgG
Clonality:	Polyclonal
Immunogen:	The immunogen for anti-ZBTB46 antibody: synthetic peptide directed towards the N terminal of human ZBTB46. Synthetic peptide located within the following region: MNNRKEDMEITSHYRHLRELNEQRQHGVLCDCVWVEGKVFKAHKNVLL
Formulation:	Liquid. Purified antibody supplied in 1x PBS buffer with 0.09% (w/v) sodium azide and 2% sucrose.
Concentration:	lot specific
Purification:	Affinity Purified
Conjugation:	Unconjugated
Storage:	Store at -20°C as received.
Stability:	Stable for 12 months from date of receipt.
Predicted Protein Size:	64 kDa
Gene Name:	zinc finger and BTB domain containing 46
Database Link:	NP_079500 Entrez Gene 140685 Human Q86UZ6
Background:	ZBTB46 contains 1 BTB (POZ) domain and 2 C2H2-type zinc fingers. ZBTB46 may be involved in transcriptional regulation.
Synonyms:	BTBD4; BZEL; dj583P15.7; dj583P15.8; RINZF; ZNF340
Note:	Immunogen Sequence Homology: Dog: 100%; Pig: 100%; Rat: 100%; Human: 100%; Mouse: 100%; Bovine: 100%; Rabbit: 100%; Guinea pig: 100%; Zebrafish: 93%; Horse: 92%



[View online »](#)

Product images:


WB Suggested Anti-ZBTB46 Antibody Titration:
0.2-1 ug/ml; Positive Control: Human Placenta