

## Product datasheet for **TA339756**

### OCEL1 Rabbit Polyclonal Antibody

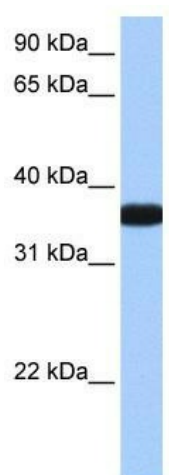
#### Product data:

Product Type:	Primary Antibodies
Applications:	WB
Recommended Dilution:	WB
Reactivity:	Human
Host:	Rabbit
Isotype:	IgG
Clonality:	Polyclonal
Immunogen:	The immunogen for anti-OCEL1 antibody: synthetic peptide directed towards the C terminal of human OCEL1. Synthetic peptide located within the following region: VWREFEMKRMDPGFLDKQARCHYLKGLRHLKTQIQKFDDQGDSEGSVYF
Formulation:	Liquid. Purified antibody supplied in 1x PBS buffer with 0.09% (w/v) sodium azide and 2% sucrose. <i>Note that this product is shipped as lyophilized powder to China customers.</i>
Concentration:	lot specific
Purification:	Affinity Purified
Conjugation:	Unconjugated
Storage:	Store at -20°C as received.
Stability:	Stable for 12 months from date of receipt.
Predicted Protein Size:	29 kDa
Gene Name:	occludin/ELL domain containing 1
Database Link:	<a href="#">NP_078854</a> <a href="#">Entrez Gene 79629 Human</a> <a href="#">Q9H607</a>
Background:	OCEL1 belongs to the ELL/occludin family. The exact functions of OCEL1 remain unknown.
Synonyms:	FWP009; S863-9
Note:	Immunogen Sequence Homology: Human: 100%; Bovine: 100%; Pig: 93%; Rat: 93%; Horse: 86%; Guinea pig: 86%; Dog: 79%



[View online »](#)

## Product images:



WB Suggested Anti-OCEL1 Antibody Titration: 0.2-1 ug/ml; Positive Control: Human lung