

Product datasheet for **TA339754**

Ankra2 Rabbit Polyclonal Antibody

Product data:

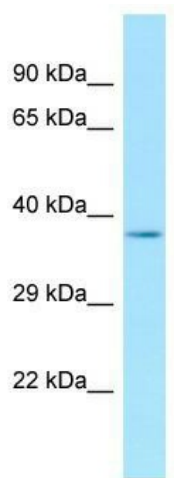
Product Type:	Primary Antibodies
Applications:	WB
Recommended Dilution:	WB
Reactivity:	Mouse
Host:	Rabbit
Isotype:	IgG
Clonality:	Polyclonal
Immunogen:	The immunogen for Anti-Ankra2 antibody is: synthetic peptide directed towards the N-terminal region of Mouse Ankra2. Synthetic peptide located within the following region: VAMGMKFILPNRFDNMNVCSESRFVKSLNEEDSKNIQDQVNSDLEVASVLFKA
Formulation:	Liquid. Purified antibody supplied in 1x PBS buffer with 0.09% (w/v) sodium azide and 2% sucrose. <i>Note that this product is shipped as lyophilized powder to China customers.</i>
Concentration:	lot specific
Purification:	Affinity Purified
Conjugation:	Unconjugated
Storage:	Store at -20°C as received.
Stability:	Stable for 12 months from date of receipt.
Predicted Protein Size:	34 kDa
Gene Name:	ankyrin repeat, family A (RFXANK-like), 2
Database Link:	NP_075961 Entrez Gene 68558 Mouse Q99PE2
Background:	Ankra2 may facilitate endocytosis by linking megalin to components of the cytoskeleton or endocytic machinery.
Synonyms:	ANKRA



[View online »](#)

Note: Immunogen Sequence Homology: Dog: 100%; Pig: 100%; Rat: 100%; Horse: 100%; Human: 100%; Mouse: 100%; Bovine: 100%; Rabbit: 100%; Zebrafish: 100%; Guinea pig: 100%; Yeast: 75%

Product images:



WB Suggested Anti-Ankra2 Antibody; Titration: 1.0 ug/ml; Positive Control: Mouse Testis