

## Product datasheet for **TA339753**

### CTBP2 Rabbit Polyclonal Antibody

#### Product data:

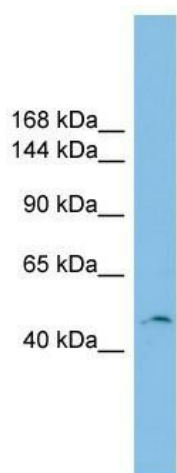
Product Type:	Primary Antibodies
Applications:	IHC, WB
Recommended Dilution:	WB, IHC
Reactivity:	Human, Mouse
Host:	Rabbit
Isotype:	IgG
Clonality:	Polyclonal
Immunogen:	The immunogen for anti-CTBP2 antibody: synthetic peptide directed towards the middle region of human CTBP2. Synthetic peptide located within the following region: APGGLPAAMEGIIPGGIPVTHNLPTVAHPSQAPSPNQPTKHGDNREHPNE
Formulation:	Liquid. Purified antibody supplied in 1x PBS buffer with 0.09% (w/v) sodium azide and 2% sucrose. <i>Note that this product is shipped as lyophilized powder to China customers.</i>
Concentration:	lot specific
Purification:	Affinity Purified
Conjugation:	Unconjugated
Storage:	Store at -20°C as received.
Stability:	Stable for 12 months from date of receipt.
Predicted Protein Size:	49 kDa
Gene Name:	C-terminal binding protein 2
Database Link:	<a href="#">NP_001320</a> <a href="#">Entrez Gene 13017 Mouse</a> <a href="#">Entrez Gene 1488 Human</a> <a href="#">P56545</a>



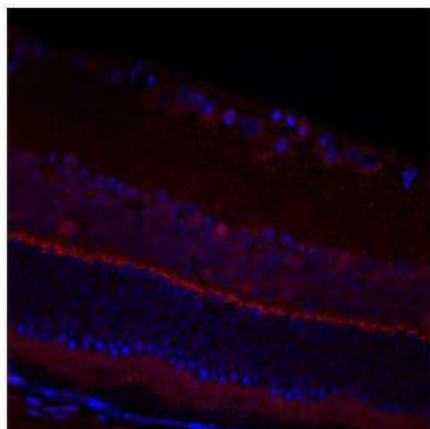
[View online »](#)

<b>Background:</b>	This gene produces alternative transcripts encoding two distinct proteins. One protein is a transcriptional repressor, while the other isoform is a major component of specialized synapses known as synaptic ribbons. Both proteins contain a NAD <sup>+</sup> binding domain similar to NAD <sup>+</sup> -dependent 2-hydroxyacid dehydrogenases. A portion of the 3' untranslated region was used to map this gene to chromosome 21q21.3; however, it was noted that similar loci elsewhere in the genome are likely.
<b>Synonyms:</b>	C-terminal binding protein 2; OTTHUMP00000020699; OTTHUMP00000020701; ribeye
<b>Note:</b>	Immunogen Sequence Homology: Dog: 100%; Pig: 100%; Rat: 100%; Goat: 100%; Horse: 100%; Human: 100%; Mouse: 100%; Bovine: 100%; Rabbit: 100%; Guinea pig: 100%
<b>Protein Families:</b>	Stem cell - Pluripotency, Stem cell relevant signaling - Wnt Signaling pathway
<b>Protein Pathways:</b>	Chronic myeloid leukemia, Notch signaling pathway, Pathways in cancer, Wnt signaling pathway

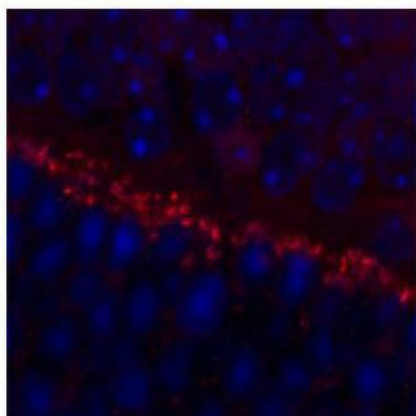
### Product images:



WB Suggested Anti-CTBP2 Antibody Titration: 0.2-1 ug/ml; ELISA Titer: 1: 1562500; Positive Control: A549 cell lysate. CTBP2 is strongly supported by BioGPS gene expression data to be expressed in Human A549 cells

**CTBP2**


Sample Type: complete mouse retina sections;  
 Red: Primary; Blue: DAPI; Primary Dilution: 1: 200;  
 Secondary Antibody: Goat anti-Rabbit AF568 IgG  
 (H+L); Secondary Dilution: 1: 200; Image  
 Submitted by: David Zenisek; Yale University

**CTBP2**


Sample Type: outer mouse plexiform layer; Red:  
 Primary; Blue: DAPI; Primary Dilution: 1: 200;  
 Secondary Antibody: Goat anti-Rabbit AF568 IgG  
 (H+L); Secondary Dilution: 1: 200; Image  
 Submitted by: David Zenisek; Yale University