

Product datasheet for **TA339751**

SMYD3 Rabbit Polyclonal Antibody

Product data:

Product Type:	Primary Antibodies
Applications:	WB
Recommended Dilution:	WB
Reactivity:	Human
Host:	Rabbit
Isotype:	IgG
Clonality:	Polyclonal
Immunogen:	The immunogen for anti-SMYD3 antibody: synthetic peptide directed towards the C terminal of human SMYD3. Synthetic peptide located within the following region: LHQGMFPQAMKNLRLAFDIMRVTHGREHSLIEDLILLLEECDANIRAS
Formulation:	Liquid. Purified antibody supplied in 1x PBS buffer with 0.09% (w/v) sodium azide and 2% sucrose. <i>Note that this product is shipped as lyophilized powder to China customers.</i>
Concentration:	lot specific
Purification:	Affinity Purified
Conjugation:	Unconjugated
Storage:	Store at -20°C as received.
Stability:	Stable for 12 months from date of receipt.
Predicted Protein Size:	42 kDa
Gene Name:	SET and MYND domain containing 3
Database Link:	NP_073580 Entrez Gene 64754 Human Q9H7B4
Background:	SMYD3 is a histone methyltransferase that plays a role in transcriptional regulation as a member of an RNA polymerase complex. SMYD3 is a histone methyltransferase that plays a role in transcriptional regulation as a member of an RNA polymerase complex. [supplied by OMIM]. Publication Note: This RefSeq record includes a subset of the publications that are available for this gene. Please see the Entrez Gene record to access additional publications.

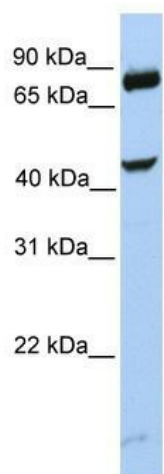


[View online »](#)

Synonyms: bA74P14.1; KMT3E; ZMYND1; ZNFN3A1

Note: Immunogen Sequence Homology: Dog: 100%; Pig: 100%; Rat: 100%; Horse: 100%; Human: 100%; Mouse: 100%; Bovine: 100%; Rabbit: 100%; Guinea pig: 100%

Product images:



WB Suggested Anti-SMYD3 Antibody Titration:
0.2-1 ug/ml; Positive Control: MCF7 cell lysate