

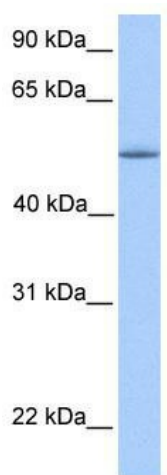
Product datasheet for TA339749

ZNF708 Rabbit Polyclonal Antibody

Product data:

Product Type:	Primary Antibodies
Applications:	WB
Recommended Dilution:	WB
Reactivity:	Human
Host:	Rabbit
Isotype:	IgG
Clonality:	Polyclonal
Immunogen:	The immunogen for anti-ZNF708 antibody: synthetic peptide directed towards the C terminal of human ZNF708. Synthetic peptide located within the following region: ILTKHKVIHTEDKPYKCEECGKTFNYSSNFTNHKKIHTGEKPYKCEECGK
Formulation:	Liquid. Purified antibody supplied in 1x PBS buffer with 0.09% (w/v) sodium azide and 2% sucrose.
Concentration:	lot specific
Purification:	Affinity Purified
Conjugation:	Unconjugated
Storage:	Store at -20°C as received.
Stability:	Stable for 12 months from date of receipt.
Predicted Protein Size:	55 kDa
Gene Name:	zinc finger protein 708
Database Link:	NP_067092 Entrez Gene 7562 Human P17019
Background:	ZNF708 belongs to the krueppel C2H2-type zinc-finger protein family. It contains 15 C2H2-type zinc fingers and 1 KRAB domain. ZNF708 may be involved in transcriptional regulation.
Synonyms:	KOX8; ZNF15; ZNF15L1
Note:	Immunogen Sequence Homology: Human: 100%; Horse: 86%; Bovine: 86%; Zebrafish: 86%; Rabbit: 85%


[View online »](#)

Product images:


WB Suggested Anti-ZNF708 Antibody Titration:
0.2-1 ug/ml; Positive Control: Human Liver