

## Product datasheet for **TA339747**

### ZNF20 Rabbit Polyclonal Antibody

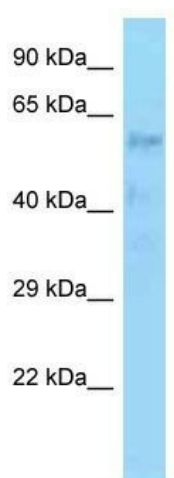
#### Product data:

Product Type:	Primary Antibodies
Applications:	WB
Recommended Dilution:	WB
Reactivity:	Human
Host:	Rabbit
Isotype:	IgG
Clonality:	Polyclonal
Immunogen:	The immunogen for Anti-ZNF20 antibody is: synthetic peptide directed towards the C-terminal region of ZNF20. Synthetic peptide located within the following region: ECKVCGKAFTCSSSIRYHERHTHTGEKPYECKHCGKAFISNYIRYHERHTHT
Formulation:	Liquid. Purified antibody supplied in 1x PBS buffer with 0.09% (w/v) sodium azide and 2% sucrose.
Concentration:	lot specific
Purification:	Affinity Purified
Conjugation:	Unconjugated
Storage:	Store at -20°C as received.
Stability:	Stable for 12 months from date of receipt.
Predicted Protein Size:	58 kDa
Gene Name:	zinc finger protein 20
Database Link:	<a href="#">NP_001190179</a> <a href="#">Entrez Gene 7568 Human P17024</a>
Background:	ZNF20 may be involved in transcriptional regulation.
Synonyms:	KOX13
Note:	Immunogen Sequence Homology: Human: 100%; Mouse: 100%
Protein Families:	Transcription Factors



[View online »](#)

## Product images:



WB Suggested Anti-ZNF20 Antibody; Titration: 1.0 ug/ml; Positive Control: HT1080 Whole Cell